

CALIFORNIA JEWELS

Monday November 21, 2016

Los Angeles



Bonhams



CALIFORNIA JEWELS

Monday November 21, 2016 at 10am

Los Angeles

BONHAMS

7601 West Sunset Blvd,
Los Angeles, CA 90046
bonhams.com

PREVIEW

New York

Friday November 11
10am to 5pm
Saturday November 12
12pm to 5pm
Sunday November 13
12pm to 5pm
Monday November 14
10am to 5pm

Los Angeles

Friday November 18
12pm to 5pm
Saturday November 19
12pm to 5pm
Sunday November 20
12pm to 5pm

SALE NUMBER: 23449

Lots 1 - 302

CATALOG: \$35

BIDS

+1 (323) 850 7500
+1 (323) 850 6090 fax

To bid via the internet please visit
www.bonhams.com/23449

Please note that telephone bids must be submitted no later than 4pm on the day prior to the auction. New bidders must also provide proof of identity and address when submitting bids. Please contact client services with any bidding inquiries.

Please see pages 67 to 72 for bidder information including Conditions of Sale, after-sale collection and shipment.

INQUIRIES

Matthew Girling, FGA
Group Jewelry Director
+44 207 468 8278
matthew.girling@bonhams.com

Susan Abeles
Director, US Jewelry
+1 (212) 461 6525
susan.abeles@bonhams.com

Los Angeles:

Dana Ehrman, GG
Director, LA Jewelry
Claire De Biasio-Paris, GG
Kelly Sitek, GG
+1 (323) 436 5424

San Francisco:

Shannon Beck, GG
+1 (415) 503 3306

Automated Results Service
+1 (800) 223 2854

ILLUSTRATIONS

Front cover: Lot 65
Inside front cover: Lot 113
Inside back cover: Lots 253
Back cover: Lot 90

Please note that irrespective of origin, jadeite and rubies (and any jewelry pieces that contain them) may now be imported into the United States.

Bonhams

220 San Bruno Avenue
San Francisco, California 94103
© 2016, Bonhams & Butterfields
Auctioneers Corp.; All rights reserved.
Bond No. 57BSBGL0808

DIAMONDS, COLORED STONES & PEARLS

The Jewelry department of Bonhams & Butterfields recognizes that there are many various forms of treatments and enhancements used in diamonds and colored stones in order to improve their appearance and or color. Techniques such as heat treatment have been used to improve the color and transparency of both sapphires and rubies in addition to other gemstones. Techniques such as oiling have been used to enhance the clarity of emeralds while dying has been used to effect the color of jade. Techniques such as heat treatment, oiling, resin impregnation, irradiation, color diffusion, dying, fracture filling, and HTHP are just a few off the techniques that are in use today. Prospective buyers are therefore reminded that unless otherwise noted in our catalog description it must be assumed that some form of enhancement may have been used and that such treatment may not always be permanent or detectable and that our estimates have taken such possibilities into account. As a matter of policy, Bonhams & Butterfields endeavors to obtain certificates from recognized gemological laboratories when such certificates are deemed crucial to the authenticity of a gemstone. It is not possible however to gain certificates for all items offered for sale and it is therefore recommended where there is no mention of a certificate that all prospective buyers consult with one of our department specialists prior to purchase of such items.

PLEASE NOTE: A number of laboratories issue certificates that give more detailed descriptions of gemstones, however there may not be consensus between different laboratories on the degrees, or types of treatment for any particular gemstone. Neither is there necessarily consensus between different laboratories, or private appraisers, on the grading of diamonds. All gemstone weights are approximations only and although an independent laboratory grading may be used in the catalog text, we cannot guarantee such gradings.

Images shown may appear smaller or larger than actual size.

Although we endeavor to mention in our descriptions significant defects, needed repairs, absent stones and the like, **WE DO NOT GUARANTEE THAT THE DESCRIPTIONS ARE COMPREHENSIVE.** Please examine all lots carefully. It is the responsibility of the prospective bidder, or his agent, to determine the condition of lots during the preview. Condition reports have been created for most lots in this auction, and are available upon request. Please contact the Jewelry department at least two days prior to the sale date for additional information.

It is the responsibility of the buyer to investigate any applicable restrictions on purchased property and to obtain any export or import licenses and/or certificates as well as any other required documentation before shipping. The buyer's inability to export or import any such items or to do so timely shall not serve as the basis for any cancellation or rescission of the sale or any delay in payment. Prospective buyers who are uncertain as to whether a lot is subject to these restrictions or any other restrictions on importation or exportation are advised to consult with the specialist department in which the property is offered.

REGULATED SPECIES MATERIALS AND CITES PERMITS

The export of a lot from the United States or import into certain countries may be subject to export or import regulations, licensure and/or other restrictions; in particular, lots containing plant or animal materials such as ivory, rhinoceros horn, tortoiseshell, coral, whalebone or certain types of woods, irrespective of age or value, may require the granting of one or more export or import licenses or certificates, or may be banned from import altogether by some countries. Moreover, the ability to obtain an export license or certificate does not insure the ability to obtain an import license or certificate in another country. Lots that contain such regulated species materials may also not be eligible for exportation or for re-importation into the United States if they are not at least 100 years of age, and, under current law, lots containing African Elephant Ivory may no longer be re-imported into the United States regardless of age. In addition, resales of lots containing certain regulated species materials may be subject to restrictions in some jurisdictions.

Lots noted in the catalog with a **Y** next to the lot number contain one or more such regulated plant or animal materials. **It is the buyer's responsibility to investigate any such restrictions and to obtain any relevant export or import licenses. Please note that this process is governed by local authorities and may take considerable time. Regardless of any delay in the obtaining of an export or import license or certificate or denial of a license's or certificate's issuance, purchased lots shall be paid for in accordance with the Conditions of Sale, and any such delay or denial shall not serve as the basis for cancellation of any sale.** Prospective buyers are advised to obtain information from the relevant regulatory authorities regarding export and import restrictions, requirements, and costs prior to bidding.

Prospective buyers should also check with their local (e.g. state) regulatory authorities regarding any local restrictions and/or permit requirements that may apply with respect to purchases of regulated species materials, including without limitation purchases of items containing elephant ivory or rhino horn. For example, we are advised that New York buyers of any lot containing elephant or mammoth ivory or rhino horn will be responsible for obtaining a New York State permit before taking possession of the lot within New York State, and that the State of New Jersey has banned the import of items containing elephant or marine mammal ivory or rhino horn into that state.

Upon request, Bonhams can refer the purchaser to a third party agent to assist the purchaser in attempting to obtain the appropriate licenses and/or certificates. However, there is no assurance that any necessary licenses or certificates can be obtained. Please contact the Specialist Department for a suggested list of shipping agents prior to placing a bid if you are uncertain as to whether a lot is subject to export/import license or certificate requirements or related restrictions.

WATCHES

Although we endeavor to mention in our descriptions significant defects, needed repairs, absent stones and the like, **WE DO NOT GUARANTEE THAT THE DESCRIPTIONS ARE COMPREHENSIVE.** Please examine all watches carefully. It is the responsibility of the prospective bidder, or his agent, to determine the condition of watches during the preview. Except as expressly set forth in the Conditions of Sale, all watches are sold "as is". We do not guarantee the accuracy or operation of any watch function such as timekeeping, chronograph, calendar, repeater or register.

We make no judgments as to whether diamond dials or diamond bezels originated at the factory or are later additions.

IMPORTANT NAMES & NOTICES (CONTINUED)

unless described in the catalog description of a lot, and a manufacturer's refusal to service or repair a timepiece due to the presence of replacement parts shall not constitute grounds to rescind a sale.

Case screw-backs have been loosened for examination and viewing by Bonhams, and should be resealed by purchasers for water resistance.

The dimensions given refer to the diameter of circular watch cases, excluding the lugs (in the case of a wristwatch) or the pendant (in the case of a pocket watch). For watches of other shapes, the corresponding width is given.

THE FOLLOWING IS AN EXPLANATION OF THE CONDITION STATEMENTS USED.

- 1. EXCELLENT:** Case with sharp edge detail and possibly with a slight trace of wear; may have minor light surface scratches; case back opening grooves (if any) with sharp detail. Dial with original finish (unless stated) and without toning; the applied indexes (if any) and hands in mint condition. Winding and setting functions were operative at the time of cataloguing (unless otherwise stated) but may need service subsequently. Movement may need service.
- 2. VERY GOOD:** Case edge detail possibly rounded by light wear or polish; may have light surface scratches and small dents; case back opening grooves (if any) possibly with some light burring. Dial possibly with light toning; the applied indexes (if any) and hands in very good condition (unless stated). Movement possibly with a few minor tool marks. Winding and setting functions were operative at the time of cataloguing (unless otherwise stated) but may need service subsequently. Movement may need service.
- 3. GOOD:** Case possibly with rounded edge detail; may have numerous light to medium surface scratches and some dents; case back opening grooves (if any) possibly with some medium burring. Dial possibly with medium toning (unless stated); the applied indexes (if any) and hands may have light surface scratches and toning. Movements possibly with numerous tool marks. Winding and setting functions were operative at the time of cataloguing (unless otherwise stated) but may need service subsequently. Movement may need service.

INCLUDING PROPERTY FROM

A Private Oregon Collection
 A Private Texas Collection
 The Estate of Faith Domergue
 The Estate of Mary Flippin
 The Estate of Sylvia McLaughlin, Berkeley, CA
 The Private Collection of Patricia Goss Rhodes, Paradise Valley, AZ
 The Estate of Ann Landers
 A Royal Family
 A New York Socialite
 Formerly from The Estate of Ben Hogan, Professional Golfer,
 PGA Champion
 A Charleston Estate

NAME	LOT NUMBER
AGA Correa & Son	294
Allsopp & Allsopp	122
Angela Cummings	2
Arthur King	3, 5
Audemars Piguet	224
Balocchi Preziosi	181
Björn Weckström.....	250
Buccellati.....	41
Bulgari.....	230, 242
Carolyn Tyler.....	18
Cartier	161, 216, 240, 243, 244, 252, 287, 288, 300, 302
David Webb.....	4, 48
David Yurman	24
Elsa Peretti	273
Eric Russell.....	38
Gérald Genta.....	242
Girard-Perregaux.....	80
Gregg Ruth.....	126, 164, 197
Grosse	254
H. Stern.....	203
Ilias Lalaounis	10, 255, 256, 258
Jacques	229
Jorge Heinz	251
Lapponia	250
Louis Comfort Tiffany.....	65
Longines	135
Lorraine Schwartz.....	44
Marco Bicego.....	253
Marsh & Co.	114
Martin Katz	183
Mish	168
Nardi	270
Nouveau 1910.....	59
Paloma Picasso.....	29
Paul Morelli	12
Piaget.....	248, 284
Poiray	241
Roberto Coin.....	260
Rolex.....	231
Schlumberger.....	9, 43
Seaman Schepps	6, 8
Tiffany & Co.....	2, 9, 29, 36, 43, 65, 66, 73, 92, 109, 178, 179, 189, 261, 272, 273, 292, 293, 301
Van Cleef & Arpels	94, 220, 237, 239
Wander.....	23
Wedderien.....	64
Yuri Ichihashi	249
Yves Kamioner	215



1

2

3

4

1 Y
A WHITE CORAL, TURQUOISE, CULTURED PEARL AND 18K GOLD NECKLACE
 coral beads approximately 13.9 to 13.7mm; no. P14041; length: 17in.

\$2,000 - 3,000

2
A PAIR OF TURQUOISE, DIAMOND AND 18K GOLD EAR CLIPS, ANGELA CUMMINGS FOR TIFFANY & CO., 1981
 signed T&Co, 1981, with maker's mark; length: 1 1/8in.

\$1,000 - 1,500

3
A PAIR OF DIAMOND AND 18K GOLD EAR CLIPS, ARTHUR KING, CIRCA 1970
 with maker's mark and signed box; estimated total diamond weight: 1.00ct; length: 1 1/8in.

\$2,500 - 3,500

4
AN 18K GOLD AND EMERALD FISH CLIP-BROOCH, DAVID WEBB
 signed Webb; weighing approximately: 33 grams; length: 2 1/2in.

\$3,000 - 5,000



5

6

7

8

9

5
A BAROQUE CULTURED PEARL, DIAMOND AND 18K GOLD BROOCH, ARTHUR KING, CIRCA 1970
 pearl approximately 15.9 x 13.2mm; with maker's mark and signed box; gross weight approximately: 26 grams; length: 1 1/2in.

\$2,000 - 3,000

6
A PAIR OF WHITE CORAL, TURQUOISE AND 18K GOLD STARFISH EARRINGS, SEAMAN SCHEPPS
 signed Seaman Schepps, no. 10614; with signed pouch; length: 1 1/4in.

\$2,000 - 3,000

7
AN 18K GOLD FRINGE NECKLACE
 weighing approximately: 39 grams; length: 16in.

\$1,000 - 2,000

8
A TURQUOISE, DIAMOND AND 18K GOLD RING, SEAMAN SCHEPPS
 cushion-shaped turquoise cabochon approximately: 15.0 x 13.5mm; signed Seaman Schepps, no. 14557; with signed pouch; size: 7

\$1,500 - 2,500

9
A DIAMOND, PLATINUM AND 18K GOLD 'X' BAND, SCHLUMBERGER FOR TIFFANY & CO.
 signed Schlumberger Tiffany & Co.; size 4 1/2

\$2,500 - 3,500



10

11

12

13

14

10
A PAIR OF 18K GOLD BEAST HOOP EARRINGS, ILIAS LALAOUNIS

with maker's mark; length: 1 3/4in.

\$3,000 - 5,000

11
TWO GEM-SET AND HIGH KARAT GOLD BEAD NECKLACES

set with sapphire, ruby and emerald beads; gross weight approximately: 37 grams; length: 16 1/2in.

\$1,000 - 2,000

12
A DIAMOND AND 18K GOLD BAND, PAUL MORELLI

signed Morelli; size: 6

\$2,000 - 3,000

PROPERTY FROM THE PRIVATE COLLECTION OF PATRICIA GOSS RHODES, PARADISE VALLEY, AZ

13
A SAPPHIRE AND 14K GOLD CLIP-BROOCH

gross weight approximately: 32 grams; length: 2 1/4in.

\$1,000 - 1,500

14
AN 18K GOLD BANGLE BRACELET

weighing approximately: 98 grams; diameter: 2 1/2in.

\$3,000 - 5,000



PROPERTY OF VARIOUS OWNERS

15
A US GOLD COIN AND 14K GOLD PENDANT
 set with a \$20 Standing Liberty gold coin, dated 1908; gross weight approximately: 74 grams; length: 2 7/8in.

\$2,000 - 3,000

16
A RUBY, EMERALD, SAPPHIRE AND HIGH KARAT GOLD NECKLACE
 gross weight approximately: 47 grams; length: 20in.

\$1,000 - 2,000

17
AN 18K GOLD BRACELET
 of seahorse motif; weighing approximately: 104 grams; length: 8in.

\$3,000 - 5,000

18
AN OPAL, TANZANITE, FRESHWATER CULTURED PEARL AND 22K GOLD PENDANT/BROOCH NECKLACE, CAROLYN TYLER
 signed C. Tyler; length: 18in.

\$2,000 - 3,000

19
A 14K GOLD LINK CHAIN NECKLACE
 weighing approximately: 55 grams; length: 30in.

\$1,000 - 2,000



20

**20
A US GOLD COIN, DIAMOND AND 14K GOLD PENDANT WITH AN 18K GOLD CHAIN**

set with a \$5 Liberty coin, dated 1893; estimated total diamond weight: 1.50cts; gross weight approximately: 40 grams; length: 24in.

\$1,200 - 1,800



21

**21
A SAPPHIRE AND HIGH KARAT GOLD LARIAT NECKLACE AND EARRING SET**

gross weight approximately: 53 grams; necklace length: 20in.; earring length: 1 3/4in.

\$1,500 - 2,500



22

**22
A DIAMOND AND 14K GOLD SOLITAIRE RING**

round brilliant-cut diamond approximately: 2.00cts; size: 7

\$1,800 - 2,500



23

**23
A PAIR OF 18K GOLD DOORKNOCKER EARRINGS, WANDER, FRENCH**

signed Wander, France, with French export marks; gross weight approximately: 39 grams; length: 1 1/2in.

\$3,000 - 5,000



24

**24
A DIAMOND AND 18K GOLD CABLE BANGLE BRACELET WRISTWATCH, DAVID YURMAN**

quartz; dial and case signed, case no. T-2144; estimated total diamond weight: 1.20cts; gross weight approximately: 60 grams; diameter: 2 1/8in.

\$3,000 - 5,000



25

25A

26

27

28

25
A PAIR OF SAPPHIRE, DIAMOND AND 18K GOLD EAR CLIPS
 oval sapphire cabochon approximately 13.0 x 9.2 x 7.4mm; *estimated total diamond weight: 3.30cts; length: 3/4in.*

\$4,000 - 6,000

25A
A CULTURED PEARL, SAPPHIRE, DIAMOND AND GOLD NECKLACE
 oval cabochon sapphire approximately 19.29 x 14.07 x 10.62mm; pearls approximately 7.5 to 5.5mm; *estimated total diamond weight: 3.60cts; length: 16 1/2in.*

\$5,000 - 8,000

26
A SOUTH SEA CULTURED PEARL, DIAMOND AND 18K TRI-COLOR GOLD FLOWER BROOCH
 pearls approximately 13.0 to 12.0mm; *estimated total diamond weight: 8.00cts; gross weight approximately: 46 grams; dimensions: 3 1/4 x 2in.*

\$4,000 - 6,000

27
A DIAMOND AND 14K GOLD BRACELET
estimated total diamond weight: 3.75cts; gross weight approximately: 32 grams; length: 6 3/4in.

\$3,000 - 5,000

28
A PAIR OF GEM-SET, DIAMOND AND GOLD EAR PENDANTS
 with black onyx, citrine and dyed blue quartz interchangeable disc drops; *gross weight approximately: 40 grams; length 2in.*

\$1,800 - 2,500



29



30



31



32



33



34

**29
A GEM-SET AND 18K GOLD CROSS
PENDANT WITH CHAIN, PALOMA
PICASSO FOR TIFFANY & CO.**

set with pink tourmaline, amethyst, citrine, peridot and aquamarine cabochons; signed Paloma Picasso, T&Co; pendant length: 2 1/8in.; chain length: 18in.

\$1,500 - 2,500

**30
A MABÉ CULTURED PEARL, DIAMOND
AND 18K GOLD RING**

mabé pearl approximately 17.0mm; size: 6 1/4

\$800 - 1,200

**31
A TSAVORITE GARNET, GEMSTONE AND
18K GOLD RING**

triangular-shaped center tsavorite garnet approximately 11.05 x 11.05 x 7.28mm; gross weight approximately: 25 grams; size: 9

\$2,000 - 3,000

**32
AN 18K BI-COLOR GOLD BRACELET**

weighing approximately: 60 grams; length: 7 1/2in.

\$1,500 - 2,500

**33
AN AUSTRIAN GOLD COIN AND 14K
GOLD PENDANT**

set with a 100 Corona gold coin, dated 1915; gross weight approximately: 46 grams; length: 2 1/2in.

\$1,200 - 1,800

**34
AN ANCIENT BRONZE COIN, DIAMOND,
TOURMALINE AND 18K GOLD
BRACELET**

estimated total diamond weight: 1.25cts; length: 7 1/2in.

\$2,000 - 3,000



35
AN 18K BI-COLOR GOLD NECKLACE
weighing approximately: 115 grams; length: 17 1/2in.

\$3,000 - 5,000

PROPERTY FROM A PRIVATE TEXAS COLLECTION

36
A DIAMOND AND 18K GOLD CROSS PENDANT WITH CHAIN, TIFFANY & CO.
signed T&Co.; length: 16in.

\$1,000 - 1,500

PROPERTY OF VARIOUS OWNERS

37
A PAIR OF MABÉ CULTURED PEARL, DIAMOND, ANCIENT BRONZE COIN AND 18K GOLD EAR PENDANTS
length: 1 3/4in.

\$800 - 1,200

38
A SET OF GEM-SET AND 18K GOLD STACKING RINGS, ERIC RUSSELL
with amethyst and multi-colored tourmaline cabochons; with maker's mark; size: 7

\$1,800 - 2,500

39
A TSAVORITE GARNET, DIAMOND AND 18K GOLD RING
oval-shaped tsavorite approximately 12.6 x 10.6 x 7.6mm; estimated total diamond weight: 1.45cts; gross weight approximately: 39 grams; size: 9

\$3,000 - 5,000

40
AN AMETHYST AND 14K GOLD NECKLACE
gross weight approximately: 115 grams; length: 40in.

\$2,500 - 3,500



41



42



43



44

PROPERTY FROM THE ESTATE OF ANN LANDERS

41
**A TOURMALINE, RUBY AND 18K GOLD BUG BROOCH,
BUCCELLATI, 1996**

*signed Buccellati, Italy 96; gross weight approximately: 54 grams;
length: 2 5/8in.*

\$7,000 - 9,000

PROPERTY OF VARIOUS OWNERS

42
**A NATURAL COLOR SOUTH SEA TAHITIAN CULTURED PEARL
NECKLACE WITH A NATURAL COLOR BROWN DIAMOND
CLASP**

*pearls approximately 13.3 to 11.3mm; estimated total diamond
weight: 1.90cts; length: 15 1/2in.*

\$2,000 - 3,000

43
**AN 18K GOLD AND LEATHER STRAP WRISTWATCH,
SCHLUMBERGER FOR TIFFANY & CO.**

*quartz; dial and case signed; case no. 000610720; with signed box;
length: adjustable*

\$1,500 - 2,500

44
**A GEM-SET, COLORED DIAMOND AND 18K BLACKENED
GOLD BANGLE BRACELET, LORRAINE SCHWARTZ**

*set with faceted green tourmaline; signed LS; with signed
box; estimated total diamond weight: 1.60cts; gross weight
approximately: 44 grams; diameter: 2 1/4in. (colored diamonds
untested for origin of color)*

\$3,000 - 5,000



45

46

47

48

45
A PERIDOT, QUARTZ AND 18K GOLD NECKLACE
 comprising nine strands of faceted peridot beads; *length: 32in.*

\$2,000 - 4,000

**PROPERTY FROM THE PRIVATE COLLECTION OF
 PATRICIA GOSS RHODES, PARADISE VALLEY, AZ**

46
A PAIR OF 14K GOLD PENDANT EARRINGS
gross weight approximately: 30 grams; length: 3in.

\$800 - 1,200

47
**A DIAMOND AND GOLD LEAF BROOCH AND PAIR OF EAR
 CLIPS**
*gross weight approximately: 45 grams; brooch length: 3 1/4in.; ear
 clip length: 1 1/4in.*

\$1,200 - 1,800

PROPERTY OF VARIOUS OWNERS

48
AN 18K GOLD FLUTED RING, DAVID WEBB
signed Webb; weighing approximately: 25 grams; size: 7

\$2,000 - 3,000



49



50



51



52

53



49^Y
**A CARVED CORAL AND WHITE METAL
FLORAL BROOCH**

dimensions: 2 1/4 x 1in.

\$800 - 1,200

50
**TWO US GOLD COIN AND 14K GOLD
PENDANTS**

set with a \$20 Liberty gold coin, dated 1899,
and a \$5 Liberty gold coin, dated 1908;
gross weight approximately: 55 grams;
*lengths: 2 and 1 1/2in. (rope chain in yellow
metal)*

\$1,600 - 2,000

51
**A CARVED JADEITE JADE, DIAMOND
AND 14K GOLD PENDANT WITH CHAIN**

*carved jadeite jade diameter approximately:
47.0mm; chain length: 29in.*

\$1,500 - 2,500

52
**TWO OPAL BEAD AND GOLD
NECKLACES**

opal beads approximately 8.3 to 3.8mm;
lengths: 19 1/2 and 18in.

\$1,000 - 2,000

53
A 14K GOLD LONG CHAIN NECKLACE
*weighing approximately: 53 grams; length:
61in.*

\$1,000 - 1,500



54^Y
A CORAL BEAD AND 14K GOLD NECKLACE
 graduated coral beads approximately 14.6 to 6.5mm; length: 19in.
\$2,000 - 3,000

55
A PAIR OF JADEITE JADE AND 14K GOLD 'BI' CUFFLINKS
 jadeite jade 'Bi' discs approximately 19.6mm; diameter: 3/4in.
\$1,000 - 2,000

Mason-Kay report #160818-5, dated August 18, 2016, stating: Natural Jadeite Jade - No Dye or Polymer Detected - 'A' Jade.

56
A CARVED JADEITE JADE AND GOLD PENDANT ON A HIGH KARAT NECKLACE
 carved jadeite jade approximately 58.0 x 25.0mm; necklace links engraved with 'Shuangxi' (Double Happiness) characters; necklace length: 17in.
\$2,000 - 3,000

57
A DIAMOND, ENAMEL AND 18K GOLD 'BEAST' FLEXIBLE BANGLE BRACELET
 gross weight approximately: 125 grams; length: 6 1/2in. (adjustable)
\$3,500 - 5,000

58
A DIAMOND AND 18K GOLD BRACELET
 gross weight approximately: 59 grams; length: 7 1/4in.
\$2,000 - 3,000



59



60



62



61



63



64

PROPERTY FROM THE PRIVATE COLLECTION OF PATRICIA GOSS RHODES, PARADISE VALLEY, AZ

59

A PLIQUE-À-JOUR ENAMEL, DIAMOND AND 18K GOLD BROOCH, NOUVEAU 1910

with maker's mark, no. 7/21; with signed box and certificate; dimensions: 1 5/8 x 1 1/4in.

\$1,200 - 1,800

60^Y

A CORAL, SEED PEARL AND METAL NECKLACE

length: 15in. (seed pearls untested for origin)

\$800 - 1,200

PROPERTY OF VARIOUS OWNERS

61

A DIAMOND AND 14K GOLD RING

estimated total diamond weight: 1.00ct; size: 4

\$1,200 - 1,800

62

AN ANTIQUE DIAMOND AND PLATINUM-TOPPED GOLD RING

old European-cut center diamond approximately 0.90ct; size: 7

\$1,000 - 2,000

63^Y

A CORAL, DIAMOND AND 18K GOLD RING

round coral cabochon approximately 24.2 x 24.1mm; size: 6

\$3,000 - 5,000

64

A DIAMOND, STONE AND PLATINUM-TOPPED 14K GOLD BROOCH/PENDANT, WEDDERIEN

signed Wedderien; estimated total diamond weight: 2.50cts; length: 1 7/8in.

\$1,000 - 1,500



65



66



67



69



68



70

**65
AN ANTIQUE OPAL, DEMANTOID
GARNET AND GOLD PENDANT, TIFFANY
& CO., CIRCA 1905**

oval black opal cabochon approximately 22.8 x 16.2mm; signed *Tiffany & Co.*, attributed to *Louis Comfort Tiffany*; length: 15in.

\$3,000 - 5,000

**66
A DIAMOND AND 18K GOLD BOW
BROOCH, TIFFANY & CO., CIRCA 1985**

signed *Tiffany + Co.*, 1985; dimension: 2 1/8 x 1in.

\$2,500 - 3,500

**67
A PAIR OF BAROQUE CULTURED
PEARL, ENAMEL, DIAMOND AND GOLD
EARRINGS**

baroque pearls approximately 12.5 x 11.5mm; length: 1 1/4in.

\$1,000 - 2,000

**68
A DEMANTOID, DIAMOND AND GOLD
DRAGONFLY BROOCH**

no. 4946; dimensions: 1 3/4 x 1 1/2in.

\$800 - 1,200

**PROPERTY FROM THE ESTATE OF
MARY FLIPPIN**

**69
A CARVED JADEITE JADE AND 14K
GOLD RING**

oval-shaped jadeite jade approximately 33.8 x 22.5mm; size: 7

\$1,000 - 2,000

PROPERTY OF VARIOUS OWNERS

**70
A 19TH CENTURY HALF PEARL, GREEN
STONE AND GOLD BANGLE BRACELET**

diameter: 2 3/8in.

\$800 - 1,200



71



72



74



73



75



71
A DIAMOND, PINK SAPPHIRE AND GOLD RING

size: 7 1/2

\$800 - 1,200

72
A PAIR OF DIAMOND AND GOLD FLORAL MOTIF EARRINGS

estimated total diamond weight: 1.00ct; length: 1in.

\$1,000 - 2,000

73
AN ANTIQUE DIAMOND AND PLATINUM-TOPPED GOLD CRESCENT BROOCH, TIFFANY & CO., CIRCA 1900

signed *Tiffany & Co.*, no. 2740 (indistinct); estimated total diamond weight: 2.75cts; length: 2 1/2in.

\$3,500 - 5,500

74
AN ANTIQUE TOURMALINE, DIAMOND AND CULTURED PEARL BROOCH/PENDANT

oval-shaped center pink tourmaline approximately 12.40 x 8.50 x 5.84mm; length: 3in.

\$1,000 - 2,000

75
THREE ANTIQUE GOLD BANGLE BRACELETS, CIRCA 1870

one set with diamonds; gross weight approximately: 65 grams; diameter: 2 1/4 to 2 1/8in.

\$1,500 - 2,500



76



77



78



77



79



77

**76
A DIAMOND AND 14K BI-COLOR GOLD
FLOWER RING**

*round brilliant-cut diamond approximately:
2.15cts; size: 6 3/4*

\$4,000 - 6,000

**77^Y
A CORAL CAMEO AND 14K GOLD
JEWELRY SUITE**

*comprising a bracelet, pair of ear clips and
brooch/pendant with snake chain; gross
weight approximately: 169 grams; chain
length: 17in.; bracelet length: 6 1/2in.; ear
clip length: 1 1/4in.*

\$2,000 - 3,000

**78
A DIAMOND, SILVER AND GOLD RING**

*old mine-cut center diamond approximately:
3.40cts; old pear-shaped side diamonds
approximately: 1.00ct and 0.80ct; estimated
remaining diamond weight: 3.50cts; size: 7*

\$4,000 - 6,000

**79
A TURN OF THE CENTURY DIAMOND,
PEARL AND SILVER-TOPPED GOLD
BROOCH**

*estimated total diamond weight: 1.00ct;
length: 2 1/8 x 2 1/4in.*

\$3,000 - 5,000



80



81



82



83



84

80
AN 18K GOLD INTEGRAL BRACELET WRISTWATCH, GIRARD-PERREGAUX
back wind movement; *dial signed*; case no. 79100200 (partially indistinct); gross weight approximately: 48 grams; length: 6 1/2in.

\$1,000 - 2,000

81
A DIAMOND AND 14K GOLD RING
old European-cut center diamond approximately: 1.40cts; size: 3 (with sizing beads)

\$2,500 - 3,500

82
A CULTURED PEARL AND 18K GOLD COLLAR NECKLACE
pearls approximately 5.4 to 3.8mm; gross weight approximately: 145 grams; length: 15in.

\$3,000 - 5,000

83
A DIAMOND AND 18K GOLD FLOWER BROOCH AND EAR CLIP SET
estimated total diamond weight: 1.60cts; gross weight approximately: 28 grams; brooch length: 1 5/8in.; ear clip length: 1in.

\$1,000 - 2,000

84
A GEM-SET, DIAMOND AND 18K GOLD BANGLE BRACELET
gross weight approximately: 132 grams; diameter: 2 3/8in.

\$3,000 - 5,000



85

86

87

88

**85
AN 18K GOLD AND RUBY TASSLE
BRACELET, ITALIAN**

*with Italian marks; gross weight
approximately: 55 grams; length: 8in.
(adjustable)*

\$1,500 - 2,500

**86
A CITRINE AND 14K GOLD JEWELRY
SUITE**

*comprising a cuff bracelet, pendant with
chain and pair of ear clips; gross weight
approximately: 111 grams; cuff diameter:
2in.; pendant length: 2in.; ear clip length: 1in.*

\$2,000 - 3,000

**87
A MEXICAN GOLD COIN, DIAMOND AND
14K GOLD PENDANT**

*set with a 50 Pesos gold coin, dated 1947;
estimated total diamond weight: 1.40cts;
gross weight approximately: 60 grams;
diameter: 2 1/4in.*

\$2,500 - 3,500

**88
A BLUE TOPAZ, DIAMOND AND 18K
GOLD RING**

*rectangular step-cut topaz approximately:
19.8 x 15.1 x 9.0mm; size: 5 3/4*

\$800 - 1,200



89



90



91



92

89
A RETRO AQUAMARINE, RUBY, DIAMOND, PLATINUM AND ROSE GOLD RING, CIRCA 1940
size: 5

\$1,000 - 2,000

90
A RETRO RUBY, DIAMOND AND 14K GOLD CLIP-BROOCH, CIRCA 1940
gross weight approximately: 46 grams; dimensions: 3 5/8 x 2 1/2in.

\$3,000 - 5,000

91
A 14K GOLD BANGLE BRACELET
weighing approximately: 76 grams; diameter: 2 1/4in.

\$1,200 - 1,800

92
A RETRO SAPPHIRE AND 14K GOLD CIRCLE BROOCH, TIFFANY & CO., CIRCA 1945
signed Tiffany & Co.; diameter: 1 1/2in.

\$1,000 - 2,000



93



94



95



96



97

93
A RETRO AQUAMARINE, DIAMOND AND GOLD OVERSIZED FLOWER BROOCH, CIRCA 1945
step-cut aquamarine approximately 16.70 x 16.40mm; gross weight approximately: 66 grams; length: 3 3/4in.

\$2,000 - 3,000

94
A PAIR OF RETRO SAPPHIRE, DIAMOND AND GOLD EAR CLIPS, CIRCA 1940
no. N.Y.43165 and 25463; length: 1in.

\$4,000 - 6,000

95
A RUBY, DIAMOND AND 18K GOLD RING
invisibly-set with French-cut rubies; size: 7

\$2,500 - 3,500

96
A RETRO AQUAMARINE AND 14K BI-COLOR GOLD RING, CIRCA 1945
rectangular step-cut aquamarine approximately 23.30 x 18.15 x 11.15mm; size: 7

\$1,000 - 2,000

97
A SAPPHIRE AND 18K GOLD BOX, FRENCH, CIRCA 1930
opening to reveal two compartments; no. 63686, with French assay marks and maker's mark; gross weight approximately: 101 grams; dimensions: 3 x 1 1/2 x 3/8in.

\$3,000 - 5,000



98

99

100

98
A DIAMOND AND 18K ROSE GOLD ETERNITY BAND
estimated total diamond weight: 2.45cts; size: 7 1/4

\$1,000 - 2,000

99
A DIAMOND AND 18K ROSE GOLD RING
pear-shaped center diamond weighing 2.33cts; size: 6 1/2

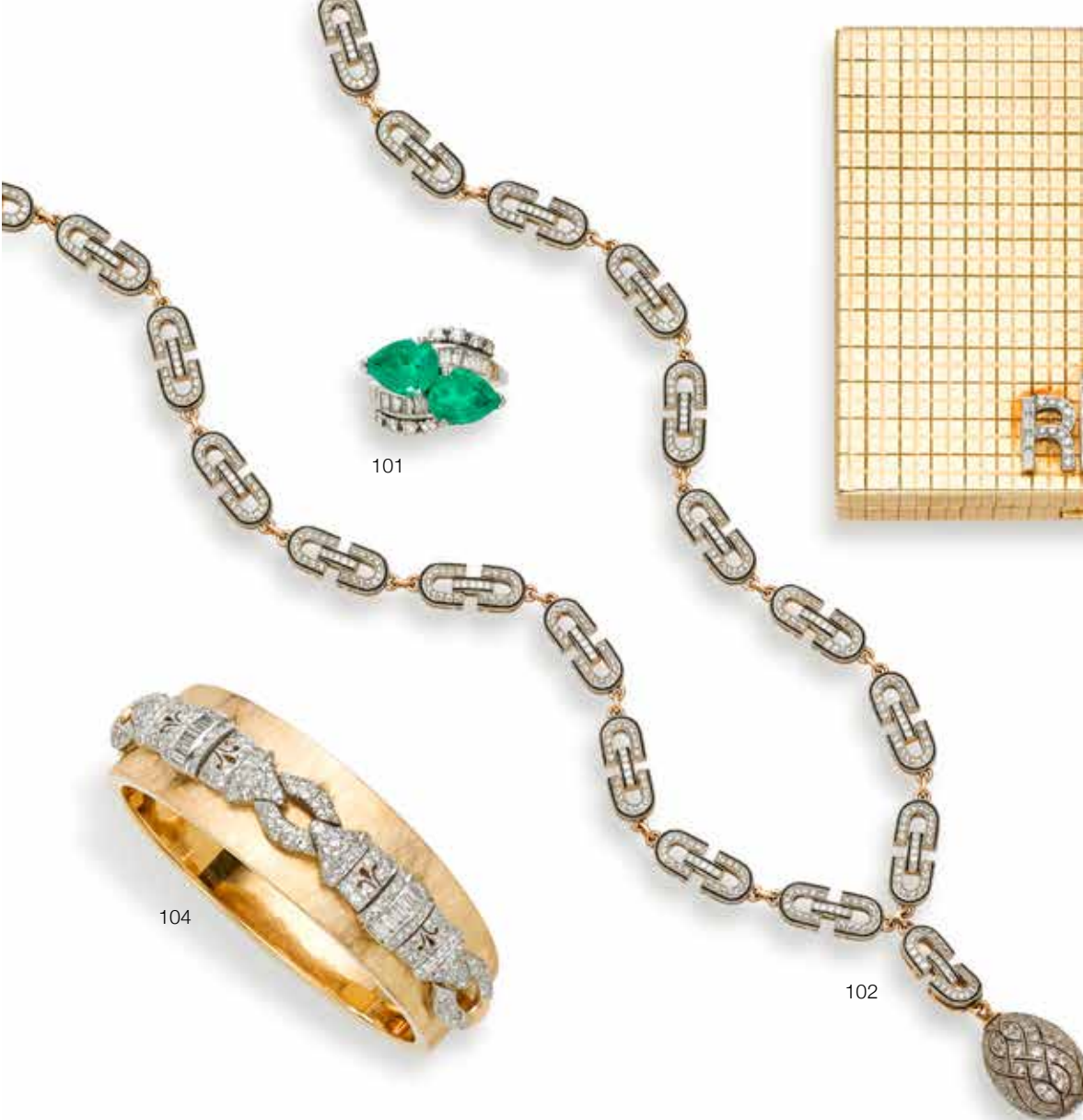
\$3,500 - 4,500

100
A DIAMOND AND SILVER-TOPPED GOLD SWAG NECKLACE
estimated total diamond weight: 19.00cts; length: 17 in.

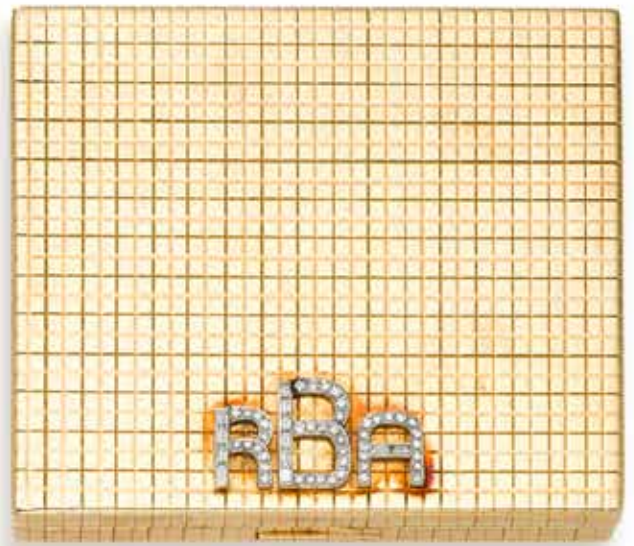
\$7,000 - 9,000

101
AN EMERALD, DIAMOND AND PLATINUM RING
pear-shaped emeralds measuring approximately 10.85 x 7.88 x 5.14mm and 10.68 x 7.73 x 5.37mm; size: 6

\$1,500 - 2,500



101



103



104

102



105

102
A DIAMOND, ENAMEL AND SILVER-TOPPED GOLD NECKLACE

estimated total diamond weight: 4.30cts; gross weight approximately: 38 grams; length: 19in.

\$2,500 - 3,500

103
A DIAMOND AND 14K GOLD COMPACT

opening to reveal a mirror; monogrammed 'RBA'; gross weight approximately: 137 grams; dimensions: 3 1/8 x 2 5/8 x 1/2in.

\$1,500 - 2,500

104
A DIAMOND, PLATINUM AND 14K GOLD BANGLE BRACELET

estimated total diamond weight: 3.70cts; gross weight approximately: 39 grams; diameter: 2in.

\$2,000 - 3,000

105
A DIAMOND, EMERALD, PLATINUM AND GOLD CLIP-BROOCH

estimated total diamond weight: 1.60cts; length: 1 7/8in.

\$1,200 - 1,800



106



107



108

109



110

106
**A PAIR OF DIAMOND AND PLATINUM
PENDANT EARRINGS**

*estimated total diamond weight: 3.85cts;
length: 1 1/2in.*

\$3,000 - 5,000

107
A DIAMOND AND PLATINUM BAR PIN

*estimated total diamond weight: 1.05cts;
length: 2 3/4in.*

\$1,200 - 1,800

108^Y
**A CORAL, ENAMEL, DIAMOND AND
PLATINUM BRACELET**

*estimated total diamond weight: 2.10cts;
length: 7 1/2in.*

\$1,800 - 2,500

109
**A BELLE ÉPOQUE SEED PEARL,
DIAMOND AND PLATINUM BRACELET,
TIFFANY & CO., CIRCA 1910**

*signed Tiffany & Co.; estimated total
diamond weight: 1.05ct; length: 7in. (seed
pearls untested for origin)*

\$3,000 - 5,000

110
**A PAIR OF ONYX, DIAMOND AND
PLATINUM EARRINGS**

*estimated total diamond weight: 1.20cts;
length: 1 1/4in.*

\$2,500 - 3,500



111



114



115



112



113

111
A SYNTHETIC RUBY, DIAMOND AND PLATINUM RING

size: 5 1/4

\$1,000 - 1,500

112
A DIAMOND AND PLATINUM LINE BRACELET

set with Old European-cut diamonds;
estimated total diamond weight: 4.45cts;
length: 6 3/4in.

\$2,000 - 3,000

113
AN ART DECO ENAMEL, DIAMOND, SEED PEARL, ONYX, PLATINUM AND GOLD SAUTOIR NECKLACE, CIRCA 1920

estimated total diamond weight: 1.40cts;
length: 21in. (seed pearls untested for origin)

\$3,000 - 5,000

114
A PAIR OF CULTURED PEARL, DIAMOND AND PATINATED STEEL EARRINGS, MARSH & CO.

pearls approximately 8.0mm; *unsigned, attributed to Marsh & Co.; length: 7/8in.*

\$1,500 - 2,500

115
AN ART DECO SYNTHETIC RUBY, DIAMOND AND PLATINUM BROOCH

estimated total diamond weight: 1.55cts;
length: 2in.

\$1,500 - 2,500



116



117



118



119



120

116
AN OPAL, DIAMOND AND PLATINUM BOW BROOCH/PENDANT ON A 14K WHITE GOLD CHAIN
oval-shaped black opal approximately 27.0 x 17.5 x 5.3 mm; *estimated total diamond weight: 2.10cts; dimensions: 2 1/4 x 1 1/8in.; chain length: 20in.*

\$2,000 - 3,000

PROPERTY OF A NEW YORK SOCIALITE

117
A 19TH CENTURY NATURAL PEARL, DIAMOND AND SILVER-TOPPED GOLD BROOCH
pearl approximately 7.7 x 7.2mm; *estimated total diamond weight: 4.90cts; length: 7/8in.*

\$2,500 - 3,500

GIA report #5171753981, dated August 17, 2016, stating: natural pearl, saltwater.

PROPERTY OF VARIOUS OWNERS

118
A 19TH CENTURY DIAMOND AND SILVER-TOPPED GOLD STARBURST BROOCH/PENDANT
old mine-cut center diamond approximately: 1.50cts; estimated remaining diamond weight: 5.40cts; length: 1 1/2in.

\$1,800 - 2,500

119
A DIAMOND AND 18K WHITE GOLD RING
estimated total diamond weight: 1.50cts; size: 7 1/2

\$1,000 - 1,500

120
AN ART DECO DIAMOND, SAPPHIRE AND PLATINUM BROOCH, FRENCH, CIRCA 1915
with French assay marks; with fitted box; estimated total diamond weight: 3.75cts; length: 2 3/4in.

\$3,000 - 5,000



121
AN EDWARDIAN DIAMOND, SAPPHIRE AND PLATINUM BROOCH/PENDANT, CIRCA 1915
estimated total diamond weight: 1.45cts; length: 2 1/4in.

\$1,500 - 2,500

122
A DIAMOND AND PLATINUM-TOPPED GOLD LINE BRACELET, ALLSOPP & ALLSOPP
signed A&A; estimated total diamond weight: 2.75cts; length: 7 1/4in.

\$2,500 - 3,500

123
A 19TH CENTURY DIAMOND AND SILVER-TOPPED GOLD FLOWER PENDANT/BROOCH
with fitted box; estimated total diamond weight: 3.15cts; length: 2 1/8in.

\$2,500 - 3,500

124
A PAIR OF DIAMOND, SAPPHIRE AND PLATINUM-TOPPED GOLD EARRINGS
with fitted box; estimated total diamond weight: 1.90cts; length: 1 1/2in.

\$3,500 - 5,000

125
AN ART DECO DIAMOND AND PLATINUM ETERNITY BAND, CIRCA 1920
set with French-cut diamonds; size: 7 1/2

\$1,500 - 2,500



126



126



127



128



129



130

126
A RUBY, DIAMOND AND 18K WHITE GOLD PENDANT WITH CHAIN AND EARRING SET, GREGG RUTH
unsigned, attributed to Gregg Ruth; estimated total diamond weight: 2.30cts; estimated total ruby weight: 1.95cts; chain length: 16in.; earring length: 1/2in.

\$5,000 - 8,000

127
A PAIR OF DIAMOND, SOUTH SEA CULTURED PEARL AND PLATINUM PENDANT EARRINGS
pearls approximately 13.1 to 12.7mm; estimated total diamond weight: 1.05cts; length: 2 1/8in.

\$1,500 - 2,500

128
AN ART DECO DIAMOND AND PLATINUM LINE BRACELET, CIRCA 1930
estimated total diamond weight: 3.50cts; length: 6 5/8in.

\$2,500 - 3,500

129
A DIAMOND AND 18K WHITE GOLD ETERNITY BAND
estimated total diamond weight: 3.50cts; size: 6

\$2,800 - 3,500

130
A DIAMOND, SAPPHIRE AND PLATINUM BYPASS RING
round-cut sapphire approximately 6.20 x 3.92mm; old European-cut center diamond approximately: 1.15cts; size: 7 3/4

\$3,500 - 4,500



131

131
A DIAMOND AND 18K WHITE GOLD RING
estimated total diamond weight: 1.20cts; size: 6 1/2

\$1,500 - 2,500

132

132
A FOUR-STRAND CULTURED PEARL, DIAMOND AND PLATINUM BRACELET
pearls approximately 8.0 to 7.5mm; estimated total diamond weight: 1.10cts; length: 7in.

\$1,000 - 1,500

133

133
A DIAMOND AND WHITE GOLD PENDANT NECKLACE
estimated total diamond weight: 2.70cts; length: 15 1/2in.

\$2,000 - 3,000

134

134
AN ART DECO DIAMOND, RUBY AND PLATINUM RING, CIRCA 1930
estimated total diamond weight: 1.50cts; size: 7

\$3,000 - 5,000

135

135
A DIAMOND AND PLATINUM WRISTWATCH WITH LATER ADDED PLATINUM BRACELET, LONGINES
15j, unadjusted; case engraved "To My Sweetheart Dec. 25, 1936"; dial and movement signed; case no. 222092; movement no. 5161440; gross weight approximately: 41 grams; length: 7 1/2 inches

\$1,000 - 2,000



136

137

138

**136
A CULTURED PEARL, DIAMOND AND PLATINUM THREE-STRAND NECKLACE**

convertible into three single-strand necklaces; pearls approximately 8.4 to 7.8mm; length: 18 to 15 1/4in.

\$1,200 - 1,800

PROPERTY FROM A PRIVATE OREGON COLLECTION

**137
A DIAMOND AND WHITE GOLD CLUSTER RING**

set with square step-cut diamonds; estimated total diamond weight: 6.00cts; size: 6 (expandable shank)

\$3,500 - 5,500

PROPERTY OF VARIOUS OWNERS

**138
A NEPHRITE JADE, DIAMOND AND PLATINUM DAY/NIGHT EAR CLIP AND RING SET**

ear clip length: 1 3/4in.; ring size: 5

\$1,500 - 2,500

**139
A JADEITE JADE, DIAMOND AND 18K WHITE GOLD PENDANT WITH CHAIN**

oval jadeite jade cabochon approximately: 16.85 x 11.30 x 3.01mm; length: 16in.

\$1,500 - 2,500

Mason-Kay report #160819-5, dated August 19, 2016, stating: Natural Jadeite Jade - No Dye or Polymer Detected - 'A' Jade.

**140
A CULTURED PEARL, JADEITE JADE, DIAMOND AND WHITE GOLD NECKLACE**

pearls approximately 9.0mm; estimated total diamond weight: 2.50cts; length: 23in.

\$2,500 - 3,500

**141
A PAIR OF DIAMOND AND 18K WHITE GOLD CLUSTER EARRINGS**

estimated total diamond weight: 2.00cts; diameter: 3/8in.

\$1,200 - 1,800

**142
A DIAMOND AND PLATINUM FLOWER BROOCH**

estimated total diamond brooch: 2.50cts; length: 2 1/4in.

\$2,000 - 3,000

**143
A DIAMOND, COLORED DIAMOND AND 18K BI-COLOR GOLD RING**

square modified brilliant-cut center diamond: 2.01cts; size: 6 1/2 (colored diamonds untested for origin of color)

\$3,000 - 5,000

**144
THREE JADEITE JADE AND WHITE GOLD SHIRT STUDS**

jadeite jade cabochons approximately: 7.2mm; diameter: 1/4in.

\$1,500 - 2,500

Mason-Kay report #160818-4, dated August 18, 2016, stating: Natural Jadeite Jade - No Dye or Polymer Detected - 'A' Jade.



139



140



141



143



142



144



145



146



147



148

145
A LADY'S DIAMOND AND PLATINUM WRISTWATCH
17j, unadjusted; movement signed *Emo Watch Co*, case signed *Ho*, no. 51; estimated total diamond weight: 8.80cts; gross weight approximately: 40 grams; length: 7in.

\$3,000 - 5,000

146
A CULTURED PEARL, DIAMOND AND WHITE GOLD BRACELET, TOGETHER WITH A PAIR OF EAR CLIPS
pearls approximately 7.5 to 7.0mm; estimated total diamond weight: 3.65cts; bracelet length 6 3/4 in.; ear clip length: 1 1/4 in.

\$1,800 - 2,500

147
A PINK-PURPLE SAPPHIRE, DIAMOND AND 18K WHITE GOLD RING
oval-shaped pink-purple sapphire weighing 2.89cts; estimated total diamond weight: 2.00cts; size: 7

\$1,800 - 2,500

GI report #5172741716, dated August 3, 2016, stating: no indications of heating.

148
A DIAMOND AND PLATINUM SPRAY BROOCH
estimated total diamond weight: 6.00cts; length: 1 3/4in.

\$2,000 - 3,000



149

150

151

152

153

149
A RUBY, DIAMOND AND WHITE GOLD BRACELET
estimated total diamond weight: 4.20cts; gross weight approximately: 60 grams; length 6 3/4 in.

\$6,000 - 8,000

150
A DIAMOND, RUBY AND PALLADIUM RING
round brilliant-cut center diamond approximately: 1.30cts; estimated remaining diamond weight: 2.50cts; size: 7 1/2

\$5,500 - 6,500

151
A DIAMOND AND PLATINUM BROOCH
estimated total diamond weight: 10.15cts; length: 2 1/2in.

\$5,000 - 7,000

152
A PAIR OF SOUTH SEA CULTURED PEARL, DIAMOND AND 18K WHITE GOLD EAR PENDANTS
pearls approximately 13.2mm; estimated total diamond weight: 1.20cts; length: 1 1/2in.

\$1,500 - 2,500

153
A PAIR OF DIAMOND AND PLATINUM EAR CLIPS
estimated total diamond weight: 5.00cts; length: 7/8in.

\$4,000 - 6,000



PROPERTY FROM A CHARLESTON ESTATE

154
A COLLECTION OF DIAMOND AND 18K WHITE GOLD JEWELRY
 comprising a rolling ring and pair of half hoop earrings; *estimated total diamond weight: 5.95cts; gross weight approximately: 29.0 grams; ring size: 6 3/4; earring length: 1in.*
\$2,000 - 3,000

PROPERTY OF VARIOUS OWNERS

155
A DIAMOND, CULTURED PEARL AND 18K WHITE GOLD COLLAR
 pearls approximately 8.9 to 8.0mm; *estimated total diamond weight: 15.25cts; gross weight approximately: 124 grams; length 15 1/2in.*
\$6,000 - 8,000

156
AN EMERALD, DIAMOND AND BI-COLOR GOLD RING
 oval-shaped emerald approximately: 14.40 x 11.35 x 5.85mm; *estimated total diamond weight: 4.00cts; size 8 1/2*
\$4,000 - 6,000

157
AN EMERALD, DIAMOND AND PLATINUM BRACELET
estimated total diamond weight: 8.00cts; gross weight approximately: 50 grams; length: 7in.
\$6,000 - 8,000

158
A DIAMOND, RUBY AND PLATINUM ROOSTER BROOCH
dimensions: 1 1/4 x 1 1/8in.
\$800 - 1,200



160



161



162



159



163

164

PROPERTY FROM A CHARLESTON ESTATE

**159
A DIAMOND AND 18K WHITE GOLD BRICKWORK LINK NECKLACE AND BRACELET**

estimated total diamond weight: 5.25cts; gross weight approximately: 137.2 grams; necklace length: 17 1/4in.; bracelet length: 8 1/4in.

\$4,000 - 6,000

PROPERTY OF VARIOUS OWNERS

**160
A TSAVORITE GARNET, DIAMOND AND WHITE GOLD RING**

oval-shaped tsavorite approximately 11.50 x 9.15 x 6.50 mm; estimated total diamond weight: 1.00ct; size: 6 1/2

\$3,000 - 5,000

**161
A STAINLESS STEEL 'SANTOS GALBEE' WRISTWATCH, CARTIER**

automatic; dial, case and deployant buckle signed; case no.2319 172097CD; gross weight approximately: 89 grams; length: 6 1/2in.

\$800 - 1,200

**162
A DIAMOND AND WHITE GOLD SOLITAIRE PENDANT WITH CHAIN**

round brilliant-cut center diamond approximately: 0.80ct; length: 16 1/4in.

\$1,000 - 2,000

**163
A DIAMOND AND 14K WHITE GOLD THREE-STONE RING**

set with emerald-cut diamonds; estimated total diamond weight: 1.80cts; size: 6 1/2

\$1,000 - 1,500

**164
A RUBY, DIAMOND, AND 18K WHITE GOLD BRACELET, GREGG RUTH**

signed Gregg Ruth; estimated total diamond weight: 8.30cts; estimated total ruby weight: 4.20cts; gross weight approximately: 28 grams; length 7 in:

\$7,000 - 9,000

165
**A PAIR OF TURQUOISE, SAPPHIRE,
DIAMOND AND 14K WHITE GOLD
CLOVER EARRINGS**
*estimated total diamond weight: 2.25cts.;
dimensions: 1 1/4 x 1 1/4in.*

\$3,000 - 5,000

166
**A SAPPHIRE, DIAMOND AND 18K
WHITE GOLD CUFF**
*gross weight approximately: 66 grams;
diameter: 2 1/4 in.*

\$4,000 - 6,000

167
**A SAPPHIRE, DIAMOND AND 18K
WHITE GOLD RING**
*cushion-shaped sapphire approximately
13.09 x 10.86 x 8.36mm; estimated total
diamond weight: 1.95cts; size: 9*

\$2,500 - 3,500

168
**A TANZANITE, DIAMOND AND 18K
WHITE GOLD TORSADE NECKLACE,
TOGETHER WITH A PAIR OF DAY/
NIGHT EARRINGS EN SUITE, MISH**
*earrings with tanzanite bead, colored
cultured pearl, diamond and 18k white gold
detachable drops; both signed MISH NY,
with signed box; estimated total diamond
weight: 5.00cts; necklace length: 23 in.;
earring length: 4 1/2in. (colored cultured
pearls untested for origin)*

\$4,000 - 6,000

169
**A SOUTH SEA CULTURED PEARL,
DIAMOND AND WHITE GOLD RING**
*pearl approximately 19.2mm; estimated total
diamond weight: 4.80cts; size: 5 1/2*

\$3,000 - 5,000

170
**A DIAMOND AND 18K WHITE GOLD
RIVIÈRE NECKLACE**
*estimated total diamond weight: 19.10cts;
gross weight approximately: 31 grams;
length: 17in.*

\$12,000 - 18,000

171
**A TOPAZ, DIAMOND, SAPPHIRE AND
WHITE GOLD RING**
*oval blue topaz approximately 20.10 x 15.05
x 11.05mm; size: 9 1/2*

\$1,800 - 2,500



165



168



166



167



169

170

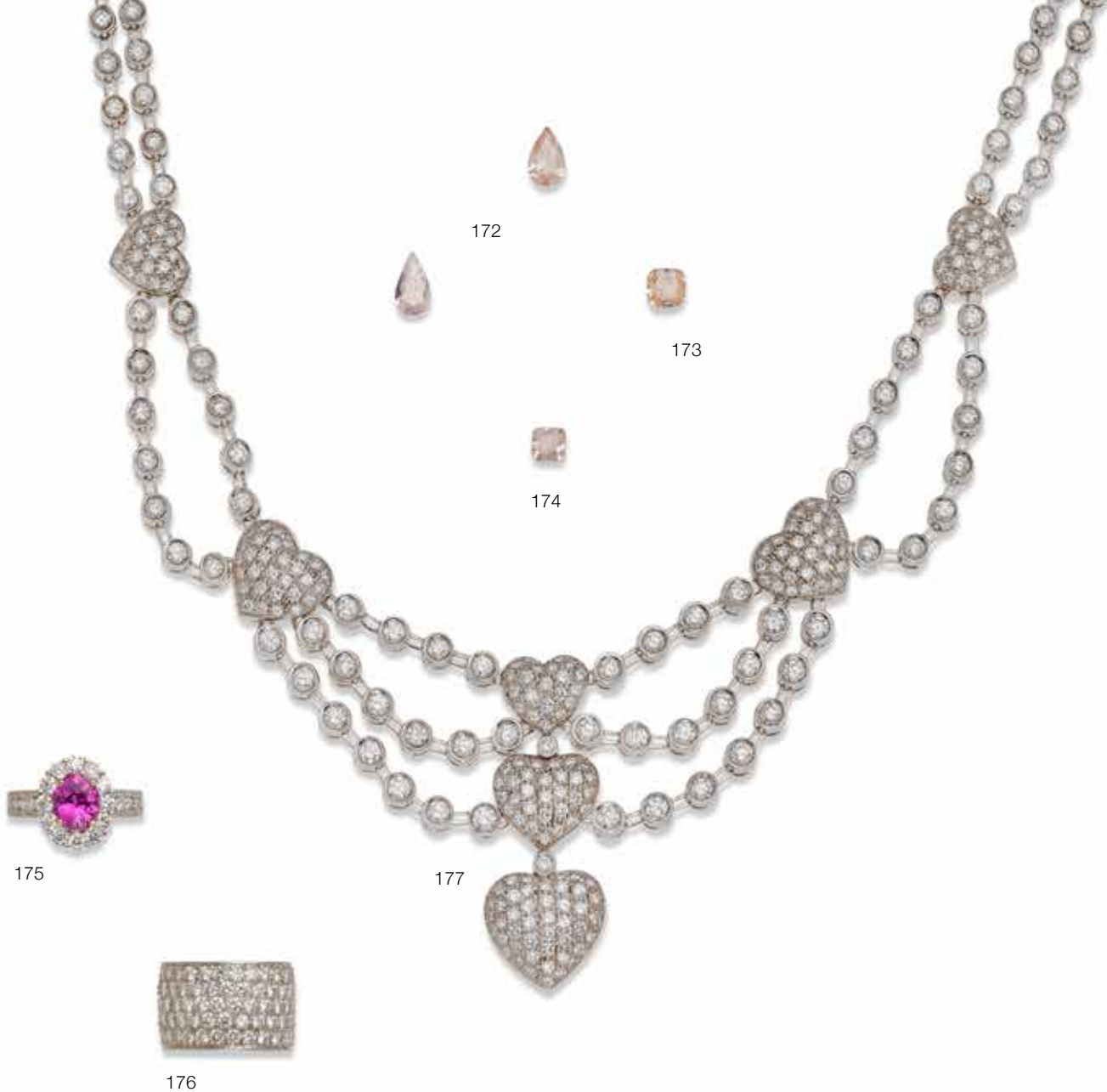


171



168





172
TWO UNMOUNTED FANCY COLORED DIAMONDS
 pear-shaped fancy light orangy pink diamond weighing: 1.10cts; pear-shaped fancy orangy pink diamond weighing: 0.93ct

\$4,000 - 6,000

GIA report #2131613713, dated July 30, 2011, stating the diamond weighing 1.10cts as: Natural Fancy Light Orangy Pink color, I3 clarity.

GIA #2131613708, dated July 18, 2011, stating the diamond weighing 0.93ct as: Natural Fancy Orangy Pink color, I1 clarity.

173
AN UNMOUNTED COLORED DIAMOND
 square cushion-shaped light pinkish brown diamond weighing: 1.02cts

\$1,000 - 1,500

GIA report #14902344, dated February 10, 2006, stating: Natural Light Pinkish Brown color.

174
AN UNMOUNTED FANCY COLORED DIAMOND
 cut-cornered rectangular brilliant-cut fancy orangy pink diamond weighing: 0.91ct

\$1,000 - 2,000

GIA report #2131613684, dated July 18, 2011, stating: Natural Fancy Orangy Pink color, I1 clarity.

175
A PINK SAPPHIRE, DIAMOND AND 18K WHITE GOLD RING
 oval mixed cut pink sapphire weighs 2.09cts; estimated total diamond weight: 1.75cts; size: 6 1/2

\$4,000 - 6,000

176
A DIAMOND AND PLATINUM BAND
 estimated total diamond weight: 5.00cts; size 5 1/2

\$3,000 - 5,000

177
A DIAMOND AND WHITE GOLD SWAG NECKLACE
 estimated total diamond weight: 19.00cts; gross weight approximately: 101 grams; length: 16 in.

\$7,000 - 9,000



178



179



180



182



181



183

178
A PAIR OF DIAMOND AND PLATINUM 'VICTORIA' EARRINGS, TIFFANY & CO.
signed Tiffany & Co.; with signed box; estimated total diamond weight: 0.90ct; length: 3/8in.

\$1,500 - 2,000

179
A DIAMOND AND PLATINUM 'VICTORIA' PENDANT WITH CHAIN, TIFFANY & CO.
signed Tiffany & Co.; with signed box; length: 16in.

\$1,000 - 2,000

180
A MULTI-COLORED SAPPHIRE, DIAMOND AND WHITE GOLD BUTTERFLY BROOCH
estimated total diamond weight: 6.00cts; gross weight approximately: 43 grams; dimensions: 2 1/2 x 2 1/2in.

\$3,500 - 5,000

181
A ROSE QUARTZ, DIAMOND AND 18K WHITE GOLD RING, BALOCCHI PREZIOSI
signed Balocchi Preziosi (partially indistinct); size: 9 1/2

\$1,500 - 2,000

182
A PINK SAPPHIRE, DIAMOND AND 18K WHITE GOLD BRACELET
oval-shaped pink sapphires weighing: 6.49cts; total diamond weight: 3.12cts; length: 7in.

\$2,000 - 3,000

183
AN AMETHYST, DIAMOND AND 18K WHITE GOLD RING, MARTIN KATZ
cushion-shaped buff-top mixed-cut amethyst weighing: 11.88cts; with maker's mark, no. 4773; estimated total diamond weight: 1.35cts; size: 3 3/4 (with sizing beads)

\$2,000 - 2,500



184



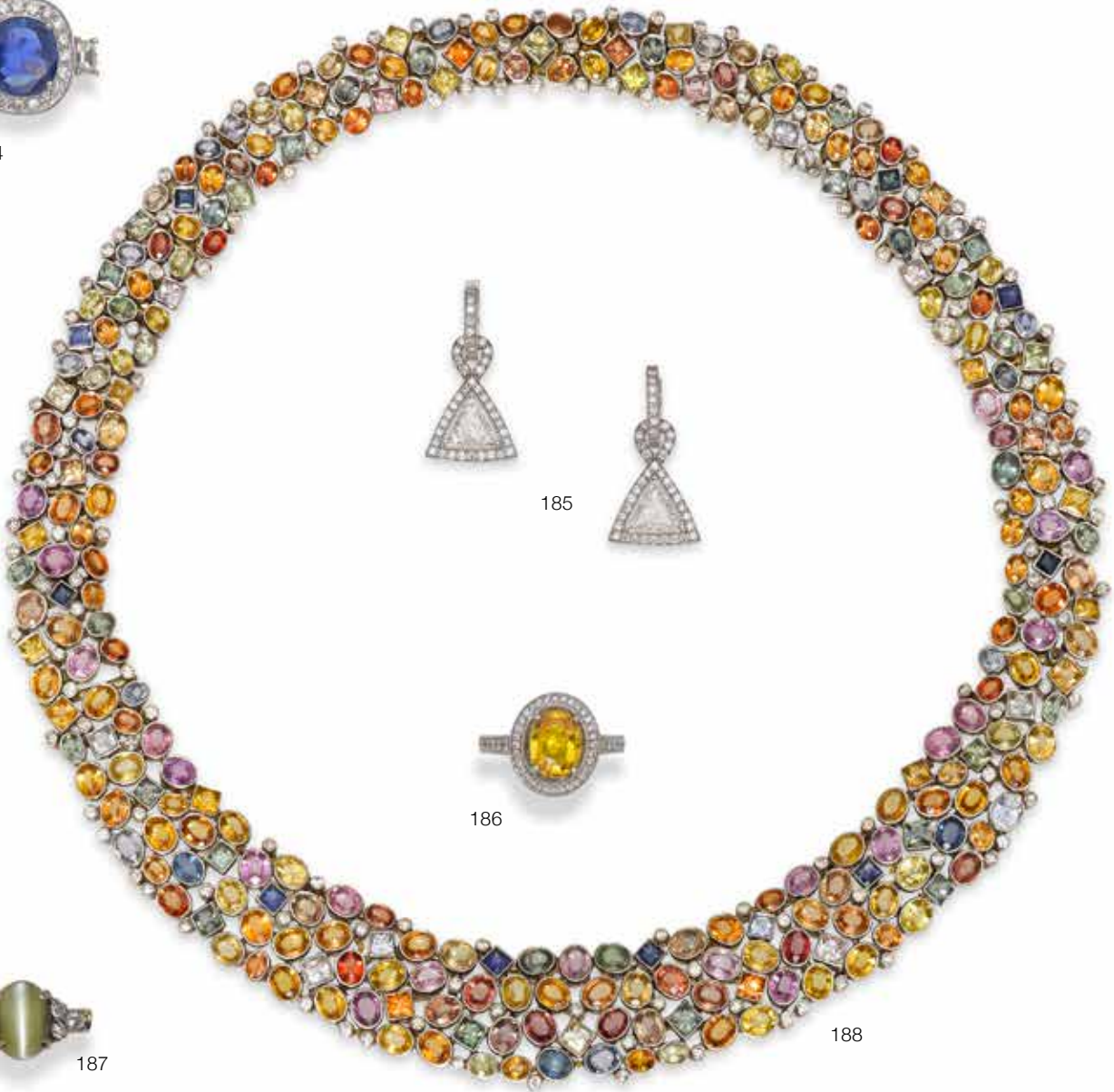
185



186



187



188

**184
A SAPPHIRE, DIAMOND AND 18K WHITE GOLD RING**

cushion-shaped sapphire weighing: 4.72cts; estimated total diamond weight: 1.80cts; size: 6 3/4

\$5,000 - 7,000

GIA #1172622152, dated June 13, 2016, stating: Sri Lankan origin, no indications of heating.

**185
A PAIR OF DIAMOND AND 18K WHITE GOLD EARRINGS**

triangular-shaped center diamonds weighing 1.01cts and 0.80ct; estimated remaining diamond weight: 1.00ct; length: 1in.

\$5,000 - 7,000

GIA report #15299839, dated September 6, 2006, stating the diamond weighing 1.01 carats as: H color, SI1 clarity.

GIA report #15299844, dated September 6, 2006, stating the diamond weighing 0.80 carat as: G color, SI1 clarity.

**186
A YELLOW SAPPHIRE, DIAMOND AND 18K WHITE GOLD RING**

oval-shaped yellow sapphire approximately: 9.24 x 7.26mm; size: 6 3/4

\$1,800 - 2,500

**187
A CAT'S EYE CHRYSOBERYL, DIAMOND AND PALLADIUM RING**

oval cat's eye chrysoberyl cabochon approximately 10.7 x 8.6mm; size: 5, with sizer

\$2,000 - 3,000

**188
A MULTI-COLORED SAPPHIRE, DIAMOND, SILVER-TOPPED GOLD COLLAR**

estimated total diamond weight: 4.00cts; gross weight approximately: 129 grams; length: 15in.

\$5,000 - 7,000



PROPERTY FROM A PRIVATE TEXAS COLLECTION

189
A PAIR DIAMOND AND PLATINUM 'BUBBLE' EARRINGS, TIFFANY & CO.
signed Tiffany & Co.; length: 3/8 in.

\$1,000 - 1,500

PROPERTY OF VARIOUS OWNERS

190
A DIAMOND AND 18K WHITE GOLD RIVIÈRE NECKLACE
estimated total diamond weight: 10.00cts; length: 16 in.

\$6,000 - 8,000

191
A DIAMOND, COLORED DIAMOND AND 18K GOLD PENDANT ON 14K WHITE GOLD CHAIN
estimated total diamond weight: 1.00ct; length: 16 in. (colored diamonds untested for origin of color)

\$1,000 - 1,500

192
A TOURMALINE, DIAMOND AND 18K WHITE GOLD RING
oval mixed cut tourmaline weighs 5.47cts; estimated total diamond weight: 1.30cts; size 6 1/2

\$3,000 - 5,000

193
A DIAMOND AND 18K WHITE GOLD RING
estimated total diamond weight: 2.50cts; size: 6

\$2,000 - 3,000

PROPERTY FROM A CHARLESTON ESTATE

194
A SET OF THREE PAIRS OF DIAMOND, YELLOW AND BLUE SAPPHIRE, RUBY AND 18K WHITE GOLD EARRINGS
estimated total diamond weight: 3.90cts; gross weight approximately: 31 grams; dimensions: 5/8 x 5/8in.

\$3,000 - 5,000

PROPERTY OF VARIOUS OWNERS

195
A DIAMOND AND 18K WHITE GOLD BRACELET
total diamond weight: 2.09cts; length: 7 in.

\$1,200 - 1,800



196



197



198



199



200

**196
A PINK SAPPHIRE, TSAVORITE GARNET,
DIAMOND AND BLACKENED GOLD
BUTTERFLY BROOCH**

*estimated total diamond weight: 2.15 carats;
gross weight approximately: 27 grams;
dimensions 3 x 2 3/4in.*

\$2,500 - 3,500

**197
A PINK SAPPHIRE, DIAMOND AND 18K
WHITE GOLD RING, GREGG RUTH**

*oval-shaped pink sapphire approximately
8.61 x 7.35 x 4.23mm; signed Gregg Ruth;
size 6 1/2*

\$1,500 - 2,000

**198
A DIAMOND AND 18K WHITE GOLD
BAND**

*estimated total diamond weight: 6.80cts;
size: 8 1/2*

\$3,500 - 5,000

PROPERTY FROM A ROYAL FAMILY

**199
A RUBELLITE TOURMALINE, DIAMOND
AND WHITE GOLD RING**

*oval-shaped rubellite tourmaline
approximately: 19.71 x 16.52 x 11.28mm;
estimated total diamond weight: 1.65cts; size
6 1/2*

\$6,000 - 8,000

**200
A COLORED CULTURED PEARL,
DIAMOND AND WHITE GOLD
NECKLACE**

*graduated pearls approximately 14.3 to
11.5mm; estimated total diamond weight:
2.00cts; length: 21in. (colored cultured pearls
untested for origin of color)*

\$2,000 - 3,000



204



202

203



201

205

**201
A CULTURED PEARL, DIAMOND AND PLATINUM NECKLACE**

graduated pearls approximately 14.0 to 11.0mm; *estimated total diamond weight: 1.75cts; length: 18in.*

\$3,000 - 5,000

PROPERTY OF ANOTHER OWNER

**202
A MULTI-COLORED DIAMOND AND 18K GOLD FLOWER RING**

estimated total diamond weight: 12.50cts; size: 9 (colored diamonds untested for origin of color)

\$2,500 - 3,500

PROPERTY FROM A PRIVATE OREGON COLLECTION

**203
A DIAMOND, 18K GOLD AND LEATHER STRAP WRISTWATCH, H. STERN**

quartz; dial and case signed, case no. 19657; diameter: 30mm

\$1,500 - 2,000

PROPERTY OF VARIOUS OWNERS

**204
A MULTI-COLORED SAPPHIRE AND BLACKENED 18K GOLD BRACELET**

set with oval-shaped fancy colored sapphires; gross weight approximately: 50 grams; 7 1/2in.

\$3,000 - 5,000

**205
A PURPLE STAR SAPPHIRE AND PLATINUM RING**

oval purple star sapphire cabochon approximately 19.1 x 16.8mm; size: 4 3/4

\$1,000 - 1,500



207

207

206

208

209



211

212

213

210

206

A RUBY, DIAMOND AND 18K GOLD RING

oval-shaped ruby approximately 8.2 x 7.3 x 4.0mm; estimated total diamond weight: 1.00ct; size 6 3/4

\$2,500 - 3,500

207

A CARVED ROSE QUARTZ, RUBY, DIAMOND AND 18K GOLD NECKLACE AND EAR CLIP SET

estimated total diamond weight: 4.50cts; gross weight approximately: 287 grams; necklace length: 23 1/2in.; ear clip length: 1in.

\$6,000 - 8,000

208

A PAIR OF DIAMOND AND 18K BI-COLOR GOLD EAR CLIPS

estimated total diamond weight: 1.70cts; length: 1in.

\$1,800 - 2,500

209

A DIAMOND AND BI-COLOR GOLD FLOWER BROOCH

estimated total diamond weight: 19.00cts; gross weight approximately: 43 grams; length: 3 1/8in.

\$5,500 - 7,500

210

A GARNET, YELLOW SAPPHIRE, DIAMOND AND GOLD FLOWER RING

round-cut garnet approximately 15.40 x 15.40 x 11.00 mm; gross weight approximately: 25 grams; size: 8 3/4

\$1,800 - 2,500

211

AN 18K GOLD 'Y' LINK BRACELET, ITALIAN

with Italian marks; weighing approximately 120 grams; length: 7 1/4in.

\$4,000 - 6,000

212

A DIAMOND AND GOLD FLEXIBLE BAND

estimated total diamond weight: 6.00cts; size: 6 1/2

\$1,500 - 2,500

PROPERTY FROM A PRIVATE OREGON COLLECTION

213

A PAIR OF RUBY, DIAMOND AND BI-COLOR GOLD PENDANT EARRINGS

estimated total diamond weight: 3.65cts; length: 2 1/4in.

\$1,800 - 2,500



PROPERTY OF VARIOUS OWNERS

**214
A PAIR OF DIAMOND AND GOLD EAR
PENDANTS**

*estimated total diamond weight: 3.50cts;
length: 2 in.*

\$1,500 - 2,500

**215
A DIAMOND AND BI-COLOR GOLD
NECKLACE, YVES KAMIONER**

*unsigned, attributed to Yves Kamioner;
estimated total diamond weight: 2.70cts;
gross weight approximately: 39 grams;
length: 19in.*

\$2,000 - 3,000

**216
A DIAMOND AND 18K GOLD
'QUATREFOIL' PENDANT, CARTIER**

*suspended from a black silk cord; signed
Cartier, with Swiss assay mark and indistinct
no.; estimated total diamond weight: 1.00ct;
length: 1 1/8in.*

\$4,000 - 6,000

**217
A TOURMALINE, DIAMOND AND 18K
GOLD RING**

*oval-shaped pink tourmaline approximately
10.50 x 8.25 x 5.20 mm; estimated total
diamond weight: 1.60cts; size: 7*

\$2,000 - 3,000

**218
A DIAMOND AND BI-COLOR GOLD
BRACELET**

*estimated total diamond weight: 3.50cts;
length 6 1/2in.*

\$1,800 - 2,500

**219
A DIAMOND AND 18K GOLD CUFF
BANGLE**

*estimated total diamond weight: 1.65cts;
gross weight approximately: 70 grams;
diameter: 2 1/2in.*

\$3,000 - 5,000



220
A PAIR OF DIAMOND AND 18K GOLD FAN EAR CLIPS, VAN CLEEF & ARPELS, FRENCH
signed VCA, no. NY 3K889-1; with French assay marks; gross weight approximately: 27 grams; length: 1 1/4in.

\$3,000 - 5,000

221
A DIAMOND AND 18K BI-COLOR GOLD CUFF BRACELET
estimated total diamond weight: 1.55cts; gross weight approximately: 69 grams; diameter: 2in.

\$2,500 - 3,500

222
A DIAMOND AND 18K GOLD RING
estimated total diamond weight: 2.00cts; size: 10

\$1,000 - 1,500

PROPERTY FROM A PRIVATE OREGON COLLECTION

223
A COLORED CULTURED PEARL, DIAMOND AND 18K GOLD NECKLACE, MIKIMOTO, TOGETHER WITH A PAIR OF EARRINGS
pearls approximately 11.0 to 10.0mm; necklace with maker's mark; estimated total diamond weight: 8.30cts; necklace length: 18in.; earrings length: 1 3/8in. (colored cultured pearls untested for origin of color)

\$3,500 - 5,500

224
A DIAMOND, AMETHYST, 18K GOLD AND LEATHER STRAP WRISTWATCH, AUDEMARS PIGUET
quartz movement with 3j; deployant clasp; dial, case and movement signed, case no. C32897; length: 6 1/2in.

\$3,000 - 5,000



PROPERTY OF VARIOUS OWNERS

225
A DIAMOND, RUBY AND GOLD BRACELET
estimated total diamond weight: 4.20cts; length 6 3/4 in.

\$3,000 - 5,000

226
A PAIR OF RUBY, DIAMOND AND 18K GOLD 'J' HOOP EAR CLIPS
estimated total ruby weight: 4.85cts; estimated total diamond weight: 1.25cts; length: 3/4in.

\$1,200 - 1,800

227
A DIAMOND AND GOLD FLEXIBLE COLLAR
estimated total diamond weight: 7.00cts; gross weight approximately: 200 grams; length 12 3/4in.

\$6,000 - 8,000

228
A DIAMOND AND 18K GOLD CUFF BANGLE WRISTWATCH
quartz; estimated total diamond weight: 3.30cts; gross weight approximately: 65 grams; diameter: 2 1/8in.

\$3,000 - 5,000

229
A BLACK ONYX, RUBY, DIAMOND, 18K GOLD AND PLATINUM NECKLACE, BRACELET AND BAND SET, JACQUES
all signed Jacques; necklace and bracelet no. 1297; ring no. 96002; estimated total diamond weight: 2.55cts; gross weight approximately: 61 grams; necklace length: 16in.; bracelet length: 7in.; ring size: 6 1/2

\$2,000 - 3,000

230
A DIAMOND AND 18K GOLD 'ALVEARE' BAND RING, BULGARI, 1989
signed Bvlgari, 1989; size: 6 (slightly adjustable)

\$2,500 - 3,500



232

233

231

234

235

236

PROPERTY FROM THE ESTATE OF SYLVIA MCLAUGHLIN, BERKELEY, CA

231
A GENT'S 14K GOLD AND LEATHER 'OYSTER PERPETUAL DATE' WRISTWATCH, ROLEX
automatic; dial signed; length: 6 1/2in.

\$1,200 - 1,800

PROPERTY FROM A CHARLESTON ESTATE

232
A DIAMOND AND 18K GOLD HEAVY LINK NECKLACE
estimated total diamond weight: 2.40cts; gross weight approximately: 100.6 grams; length: 16in.

\$3,000 - 5,000

PROPERTY OF VARIOUS OWNERS

233
A PAIR OF DIAMOND AND GOLD EAR PENDANTS
estimated total diamond weight: 5.90cts; length: 1 5/8 in.

\$2,000 - 3,000

234
A DIAMOND AND 18K GOLD ETERNITY BAND
estimated total diamond weight: 2.25cts; size: 6 1/2

\$1,200 - 1,800

235
A COLORED DIAMOND, ENAMEL, EMERALD AND 18K GOLD PANTHER CLIP BROOCH, RETAILED BY DAVID ORGELL
signed D.Orgell; estimated total diamond weight: 3.60cts; gross weight approximately: 60 grams; dimensions: 2 1/2 x 1 1/4in. (colored diamonds untested for origin of color)

\$5,000 - 8,000

PROPERTY FROM A CHARLESTON ESTATE

236
A DIAMOND AND 18K GOLD BRACELET
estimated total diamond weight: 3.50 carats; gross weight approximately: 67.3 grams; length: 8in.

\$2,000 - 3,000



237



238



239



240

241

PROPERTY OF VARIOUS OWNERS

237
A DIAMOND AND 18K GOLD ETERNITY BAND, VAN CLEEF & ARPELS 1984
signed VCA, 84; no. B5462A7; estimated total diamond weight: 1.40cts; size 4 3/4

\$4,000 - 6,000

238
A PAIR OF DIAMOND AND 18K BI-COLOR GOLD EARRINGS
estimated total diamond weight: 3.90cts; length: 7/8in.

\$3,000 - 5,000

239
A DIAMOND AND 18K GOLD SOLITAIRE RING, VAN CLEEF & ARPELS, FRENCH
signed V.C.A., no. CRO5.11DM; with French assay marks; size: 6 3/4

\$1,500 - 2,500

240
A DIAMOND AND 18K GOLD BAND, CARTIER
signed Cartier, no. 779580; estimated total diamond weight: 1.00ct; size: 7

\$3,000 - 5,000

241
A HEMATITE BEAD AND 18K GOLD COLLAR, POIRAY, FRENCH
with maker's mark and French assay marks, no. 548; with signed box; gross weight approximately: 320 grams; length: 14in.

\$3,000 - 5,000



242

243

244

245

246

PROPERTY FROM THE ESTATE OF FAITH DOMERGUE

242
AN 18K BI-COLOR GOLD AND LEATHER STRAP WRISTWATCH, GÉRALD GENTA FOR BULGARI

17j, unadjusted; case signed *Bulgari*, no. 2628 (back) and *Gérald Genta* (inside), with Swiss assay marks; movement signed *Ebel*, *Gérald Genta*; width: 25.0mm

\$1,000 - 1,500

PROPERTY FROM A PRIVATE TEXAS COLLECTION

243
AN 18K TRI-COLOR GOLD 'TRINITY' BAND, CARTIER

signed *les must de Cartier*, no. 1571; size: 6 1/2

\$1,000 - 1,500

244
A PAIR OF 18K TRI-COLOR GOLD 'TRINITY' EARRINGS, CARTIER, CIRCA 1992

signed *Cartier*, 1992, no. B50640; with signed box; length: 1 1/4in.

\$3,500 - 4,500

PROPERTY OF VARIOUS OWNERS

245
A PAIR OF DIAMOND AND 18K GOLD CUFFLINKS, CARTIER, TOGETHER WITH THREE DIAMOND, 18K AND 14K GOLD SHIRT STUDS

cufflinks signed *Cartier*, no. 00109; estimated total diamond weight: 1.50cts; gross weight approximately: 37 grams; cufflinks diameter: 5/8in.; shirt stud diameter: 3/8in.

\$3,000 - 5,000

246
A 14K GOLD FANCY LINK NECKLACE
 weighing approximately: 98 grams; length: 45in.

\$2,500 - 3,500



247



248



250

249

247

A TOURMALINE, DIAMOND AND 18K GOLD RING

oval-shaped green tourmaline approximately 13.50 x 11.30 x 6.70mm; *estimated total diamond weight: 1.25cts; size: 6 1/2*

\$1,500 - 2,500

PROPERTY FROM A ROYAL FAMILY

248

A LAPIS LAZULI, NEPHRITE AND 18K GOLD INTEGRAL BRACELET WRISTWATCH, PIAGET, CIRCA 1970

dial and bracelet signed; case no. 9212 D76/174630; gross weight approximately: 188 grams; length: 6 1/2in.

\$6,000 - 8,000

PROPERTY OF VARIOUS OWNERS

249

AN 18K GOLD WOVEN MESH NECKLACE, YURI ICHIHASHI

signed Yuri Ichihashi; weighing approximately 76 grams; length: 16in.

\$2,000 - 3,000

250

A 14K GOLD AND BAROQUE CULTURED PEARL 'BUTTERFLY WOMAN' NECKLACE, BJÖRN WECKSTRÖM FOR LAPPONIA, CIRCA 1979

signed Lapponia; with Finnish hallmarks, 1979; gross weight approximately: 40 grams; length: 20 1/2in.

\$2,000 - 3,000



251



252



253

254

251
A DIAMOND AND 18K GOLD PENDANT NECKLACE, JORGE HEINZ
with maker's mark; length: 17in.

\$1,800 - 2,500

252
A DIAMOND AND 18K TRI-COLOR GOLD 'TRINITY' RING, CARTIER
signed Cartier, no. 810608; estimated total diamond weight: 1.55cts; size: 5 1/4

\$4,500 - 6,500

253
A PAIR OF DIAMOND AND 18K GOLD BEAN BRACELETS, MARCO BICEGO, ITALIAN

signed Marco Bicego; estimated total diamond weight: 2.50cts; gross weight approximately: 149 grams; length: 7 1/2in.

\$7,000 - 9,000

254
A LAPIS LAZULI, CULTURED PEARL AND 18K GOLD BROOCH AND EAR CLIP SET, GROSSE, 1972

signed Grosse, 1972, Germany; brooch length: 1 1/2in.; ear clip length: 3/4in.

\$1,000 - 1,500



255

256

PROPERTY FROM A ROYAL FAMILY

255
AN 18K GOLD BROOCH AND EAR CLIP SET, ILIAS LALAOUNIS
signed Ilias Lalaounis, Greece, with maker's mark; gross weight approximately: 48 grams; brooch length: 2 1/4in.; ear clip length: 2 1/8in.

\$2,000 - 3,000

256
AN 18K GOLD COLLAR NECKLACE, ILIAS LALAOUNIS
with maker's mark; weighing approximately: 238 grams; length: 14in.

\$8,000 - 10,000



257



258



259

257
A CARVED AGATE, CARNELIAN AND 18K GOLD PENDANT AND EARRING SET
gross weight approximately: 58 grams; pendant length: 4 1/4in.; earring length: 2 1/8in.

\$700 - 1,000

258
AN 18K GOLD BANGLE BRACELET, ILIAS LALAOUNIS
with maker's mark; weighing approximately 79 grams; diameter: 2 1/4in.

\$3,500 - 5,000

259
A GOLD BANGLE BRACELET SET
comprising twenty-nine bracelets; gross weight approximately: 209 grams; diameter: 2 3/8in.

\$3,500 - 4,500



262

260

261

263

264

PROPERTY FROM A PRIVATE TEXAS COLLECTION

260
A DIAMOND AND 18K GOLD NECKLACE AND EARRING SET ROBERTO COIN, ITALIAN

with maker's mark; estimated total diamond weight: 2.00cts; gross weight approximately: 45 grams; necklace length: 16 1/2in.; earring length: 1 5/8in.

\$1,500 - 2,500

261
A PAIR OF 18K GOLD HALF HOOP EARRINGS, TIFFANY & CO.

signed Tiffany & Co.; length: 7/8in.

\$1,000 - 1,500

PROPERTY OF VARIOUS OWNERS

262
AN ENAMEL, CULTURED PEARL, EMERALD, DIAMOND AND 14K GOLD BANGLE BRACELET

estimated total diamond weight: 1.00ct; gross weight approximately: 52 grams; diameter: 2 1/4in.

\$800 - 1,200

PROPERTY FROM A ROYAL FAMILY

263
A RUBY, DIAMOND AND 18K GOLD RING

oval-shaped ruby approximately 7.60 x 6.55 x 3.60mm; estimated total diamond weight: 1.00ct; size: 7 1/4

\$2,500 - 3,500

264
A GOLD BEAD NECKLACE

weighing approximately: 70 grams; length: 35in.

\$1,200 - 1,800



265

265
**A US GOLD COIN CHARM NECKLACE
 AND BRACELET SET**

each suspending a \$20 Standing Liberty
 gold coin, dated 1924; gross weight
 approximately: 248 grams; necklace length:
 24 1/2in.; bracelet length: 8in.

\$4,000 - 6,000

266
A GOLD BYZANTINE LINK NECKLACE
 weighing approximately: 102 grams; length:
 38 1/2in.

\$1,800 - 2,500

267
A GOLD FANCY LINK NECKLACE
 weighing approximately: 78 grams; length:
 31 1/2in.

\$1,800 - 2,500

268

268
**A SET OF FOUR EMERALD, RUBY AND
 GOLD BANGLE BRACELETS**

gross weight approximately: 126 grams;
 diameter: 2 1/8in.

\$2,500 - 3,500



269



270



272

271



273

274

PROPERTY OF VARIOUS OWNERS

**269
AN EMERALD, DIAMOND, PLATINUM
AND 18K GOLD RING**

round-shaped emerald approximately:
3.70cts; estimated total diamond weight:
1.00ct; size: 6

\$2,800 - 3,500

**270
A CARVED JADEITE JADE, DIAMOND,
RUBY AND 18K GOLD PENDANT, NARDI**

carved jadeite jade approximately 16.85
x 12.0mm; signed Nardi; estimated total
diamond weight: 1.50cts; length: 2 in.

\$2,000 - 3,000

**271
A DIAMOND, CULTURED PEARL,
EMERALD AND 18K GOLD ELEPHANT
NECKLACE**

pearls approximately 8.0 to 7.0mm;
estimated total diamond weight: 2.00cts;
length: 15 1/2 in.

\$3,000 - 5,000

**272
AN 18K GOLD AND RUBY ZEBRA
BROOCH, TIFFANY & CO.**

signed Tiffany & Co., no. 6477 (partially
indistinct); dimensions: 1 3/4 x 1 1/4in.

\$800 - 1,200

**PROPERTY FROM A PRIVATE
TEXAS COLLECTION**

**273
AN EMERALD AND 18K GOLD
BRACELET, ELSA PERETTI FOR TIFFANY
& CO.**

signed Peretti T&Co.; length: 7in.

\$1,000 - 1,500

PROPERTY OF VARIOUS OWNERS

**274
A GEM-SET AND 18K GOLD BRAIDED
BRACELET**

set with pink and blue sapphires and
chrysoptase; gross weight approximately: 40
grams; length: 7 3/4in.

\$1,000 - 2,000



276

277

275

278

279

280

**275
A SET OF GEM-SET, DIAMOND AND 18K GOLD JEWELRY**

comprising a brooch, pair of earrings and ring; *estimated total diamond weight: 6.30cts.; gross weight approximately: 43 grams; brooch diameter: 1 5/8 in.; earring length: 1in.; ring size: 6*

\$3,000 - 5,000

**276
A DIAMOND AND 18K GOLD FLY BROOCH**

estimated total diamond weight: 3.35cts; gross weight approximately: 13 grams; dimensions: 1 1/2 x 1 1/2 in.

\$2,500 - 3,500

**277
A GEM-SET, DIAMOND AND 18K GOLD BRACELET**

set with sapphires, rubies and emeralds; *estimated total diamond weight: 4.50cts; length: 6 3/4 in.*

\$3,000 - 5,000

**278
A DIAMOND AND 14K GOLD RIVIÈRE NECKLACE**

estimated total diamond weight: 3.75cts; length: 16in.

\$1,000 - 2,000

**279
A DIAMOND, SAPPHIRE AND 18K GOLD RING**

marquise-shaped center diamond approximately: 2.15cts; size: 6

\$3,000 - 5,000

**280
A SAPPHIRE, DIAMOND AND GOLD BIRD CLIP-BROOCH**

estimated total diamond weight: 2.75cts; gross weight approximately: 25 grams; dimensions: 3 1/2 x 7/8 in.

\$2,500 - 3,500



281



282



283



284

285

PROPERTY FROM A CHARLESTON ESTATE

281
A DIAMOND AND 18K GOLD BOW BROOCH
estimated total diamond weight: 5.00cts; dimensions: 1 3/4 x 1 9/16in.

\$2,000 - 3,000

PROPERTY OF VARIOUS OWNERS

282
A PAIR OF DIAMOND AND GOLD EAR PENDANTS
estimated total diamond weight: 3.85cts; length: 1 1/2in.

\$3,000 - 5,000

283^Y
A CORAL, DIAMOND AND 18K GOLD NECKLACE
graduated coral beads approximately 6.5 to 4.2mm; estimated total diamond weight: 1.70cts; length: 17in.

\$3,000 - 5,000

PROPERTY FORMERLY FROM THE ESTATE OF BEN HOGAN, PROFESSIONAL GOLFER, PGA CHAMPION

284
AN 18K GOLD INTEGRAL BRACELET WRISTWATCH, PIAGET
quartz; dial and bracelet signed, case no. 922 E 21/331292; gross weight approximately: 47 grams; length: 6 3/4in.

\$1,500 - 2,500



286



287



288



289



290

PROPERTY FROM A PRIVATE TEXAS COLLECTION

**285
A DIAMOND AND 18K GOLD SOLITAIRE PENDANT**

round brilliant-cut diamond approximately: 1.00ct; length: 18in.

\$2,000 - 3,000

PROPERTY FROM A CHARLESTON ESTATE

**286
A DIAMOND AND 18K BI-COLOR GOLD LEAF BROOCH**

estimated total diamond weight: 7.10cts; gross weight approximately: 28 grams; dimensions: 2 1/4 x 2 3/16in.

\$4,000 - 6,000

PROPERTY OF VARIOUS OWNERS

**287
A PAIR OF 18K TRI-COLOR GOLD 'TRINITY' EAR PENDANTS, CARTIER**
signed Cartier; no. RA4104; length: 2 1/4in.

\$2,500 - 3,500

**288
AN 18K TRI-COLOR GOLD 'TRINITY' NECKLACE, CARTIER**
signed Cartier, no. CR5906; length: 14 1/2in. and adjustable

\$1,500 - 2,500

**289
A SPINEL, DIAMOND AND 18K GOLD BRACELET**
estimated total red spinel weight: 9.00cts; estimated total diamond weight: 1.40cts; length: 7in.

\$5,000 - 7,000

**290
A DIAMOND AND 18K GOLD LONG CHAIN**
estimated total diamond weight: 2.05cts; length; 40in.

\$1,000 - 2,000



291



292



293



294



295



296



297

291
A DIAMOND AND WHITE GOLD SOLITAIRE PENDANT WITH CHAIN
round brilliant-cut diamond approximately: 1.10cts; length: 14in.

\$2,000 - 3,000

292
A PAIR OF PINK SAPPHIRE, DIAMOND AND PLATINUM 'STAR' EARRINGS, TIFFANY & CO.
signed T&Co.; length: 1 1/8in.

\$1,000 - 2,000

293
A PAIR OF DIAMOND AND PLATINUM 'STARS' MULTI-DROP EARRINGS, TIFFANY & CO.
signed T&Co.; estimated total diamond weight; 1.30cts; length: 2in.

\$2,500 - 3,500

PROPERTY FROM A ROYAL FAMILY

294
A DIAMOND AND 14K WHITE GOLD 'CONSTELLATION' BROOCH, AGA CORREA & SON
signed Aga; dimensions: 1 1/2 x 1 1/4in.

\$200 - 300

295
A CULTURED PEARL NECKLACE
pearls approximately 9.8 to 9.4mm; length: 31 1/2in.

\$1,000 - 2,000

PROPERTY OF VARIOUS OWNERS

296
A TOURMALINE, DIAMOND AND 18K WHITE GOLD BYPASS RING
estimated total diamond weight: 1.70cts; size 7

\$1,500 - 2,500



298



299



300



301



302



297
A SAPPHIRE, DIAMOND AND 14K WHITE GOLD RING

oval-shaped sapphire: 5.00cts; *estimated total diamond weight: 1.00ct; size: 7 1/4*

\$3,500 - 4,500

GIA report #6137618735, dated July 25, 2011, stating: indications of heating.

298
A CULTURED PEARL NECKLACE

convertible into two necklaces, with invisible clasp; pearls approximately 8.4 to 8.0mm; *length: 34 1/2in.*

\$1,000 - 1,500

299
A DIAMOND AND 18K WHITE GOLD STARBURST BROOCH/PENDANT

estimated total diamond weight: 2.25cts; dimensions: 1 1/4 x 1 1/4in.

\$1,200 - 1,800

300
A GEM-SET, DIAMOND AND PLATINUM 'MELI MELO' RING, CARTIER

set with pink tourmaline, moonstone, aquamarine and mandarin garnet; *signed Cartier, no. 980880; size: 4 3/4*

\$3,000 - 5,000

PROPERTY FROM A PRIVATE TEXAS COLLECTION

301
A DIAMOND AND PLATINUM CIRCLE PENDANT NECKLACE, TIFFANY & CO.
signed Tiffany & Co.; length: 16in.

\$1,000 - 1,200

PROPERTY OF ANOTHER OWNER

302
A DIAMOND AND 18K GOLD 'TANK FRANÇAISE' WRISTWATCH, CARTIER
quartz; dial, case and deployant buckle signed; case no. 2403 MG300139; with signed box and papers; estimated total diamond weight: 1.20cts; gross weight approximately: 79 grams; diameter: 6 1/2in.

\$3,000 - 5,000

DIAMOND GRADING

COLOR

GIA	CIBJO	UK TRADITIONAL
D	Exceptional White +	Finest White
E	Exceptional White	Finest White
F	Rare White +	Fine White
G	Rare White	Fine White
H	White	White
I	Slightly Tinted White	Commercial White
J	Slightly Tinted White	Top Silver Cape
K	Tinted White	Top Silver Cape
L	Tinted White	Silver Cape
M TO N	Tinted Color	Light Cape
O TO R	Tinted Color	Cape
R TO Z	Tinted Color	Dark Cape

CLARITY

IF	Internally Flawless	No inclusions and only insignificant surface blemishes when viewed under 10X magnification
VVS1 - VVS2	Very Very Slightly Included	Minute inclusions that are incredibly difficult to see under 10X magnification, generally only visible from the back of the stone and may be removed easily by repolishing
VS1 - VS2	Very Slightly Included	Minor inclusions that range from difficult (VS1) to slightly easier (VS2) to see under 10X magnification
SI1 - 2	Slightly Included	Noticeable inclusions that are easy (SI1) or very easy (SI2) to see under 10X magnification
I1 - 3	Obvious Inclusions	Obvious inclusions that are easily visible under 10X magnification and in some cases may even be seen without magnification

RING SIZES

ENGLISH	METRIC	AMERICAN	FRENCH/JAPANESE
A	37.8252	½	-
A½	38.4237	¾	-
B	39.0222	1	-
B½	39.6207	1¼	-
C	40.2192	1½	-
C½	40.8177	1¾	-
D	41.4162	2	1
D½	42.0147	2¼	2
E	42.6132	2½	-
E½	43.2117	2¾	3
F	43.8102	3	4
F½	44.4087	3¼	-
G	45.0072	3½	5
G½	45.6057	3¾	-
H	46.2042	4	6
H½	46.8027	4¼	-
I	47.4012	4½	7
I½	47.9997	4¾	8
J	48.5982	5	-
J½	49.1967	5¼	9
K	49.7952	5½	10
K½	50.3937	5¾	-
L	50.9922	6	11
L½	51.5907	6¼	-
M	52.1892	6½	12
M½	52.7877	6¾	13
N	53.4660	7	-
N½	54.1044	7¼	14
O	54.7428	7½	15
O½	55.3812	7¾	-
P	56.0196	8	16
P½	56.6580	8¼	-
Q	57.2964	8½	17
Q½	57.9348	8¾	18
R	58.5732	9	-
R½	59.2116	9¼	19
S	59.8500	9½	20
S½	60.4884	9¾	-
T	61.1268	10	21
T½	61.7652	10¼	22
U	62.4026	10½	-
U½	63.0420	10¾	23
V	63.6804	11	24
V½	64.3188	11¼	-
W	64.8774	11½	25
W½	65.4759	11¾	-
X	66.0744	12	26
X½	66.6729	12¼	-
Y	67.2714	12½	-
Y½	67.8699	12¾	-
Z	68.4684	13	-

CONDITIONS OF SALE

The following Conditions of Sale, as amended by any published or posted notices or verbal announcements during the sale, constitute the entire terms and conditions on which property listed in the catalog shall be offered for sale or sold by Bonhams & Butterfields Auctioneers Corp. and any consignor of such property for whom we act as agent. If live online bidding is available for the subject auction, additional terms and conditions of sale relating to online bidding will apply; see www.bonhams.com/WebTerms for the supplemental terms. As used herein, "Bonhams," "we" and "us" refer to Bonhams & Butterfields Auctioneers Corp.

1. As used herein, the term "bid price" means the price at which a lot is successfully knocked down to the purchaser. The term "purchase price" means the aggregate of (a) the bid price, (b) a PREMIUM retained by us and payable by the purchaser EQUAL TO 25% OF THE FIRST \$150,000 OF THE BID PRICE, 20% OF THE AMOUNT OF THE BID PRICE ABOVE \$150,000 UP TO AND INCLUDING \$3,000,000, AND 12% OF THE AMOUNT OF THE BID PRICE OVER \$3,000,000, and (c) unless the purchaser is exempt by law from the payment thereof, any Arizona, California, Colorado, Connecticut, Florida, Georgia, Illinois, Massachusetts, Nevada, New Jersey, New York, Pennsylvania, Texas, Virginia, Washington, D.C., Washington state, or other state or local sales tax (or compensating use tax) and other applicable taxes.

2. On the fall of the auctioneer's hammer, the highest bidder shall have purchased the offered lot in accordance and subject to compliance with all of the conditions set forth herein and (a) assumes full risk and responsibility therefor, (b) if requested will sign a confirmation of purchase, and (c) will pay the purchase price in full or such part as we may require for all lots purchased. No lot may be transferred. Any person placing a bid as agent on behalf of another (whether or not such person has disclosed that fact or the identity of the principal) may be jointly and severally liable with the principal under any contract resulting from the acceptance of a bid.

Unless otherwise agreed, payment in good funds is due and payable within five (5) business days following the auction sale. Whenever the purchaser pays only a part of the total purchase price for one or more lots purchased, we may apply such payments, in our sole discretion, to the lot or lots we choose. Payment will not be deemed made in full until we have collected good funds for all amounts due.

Payment for purchases may be made in or by (a) cash, (b) cashier's check or money order, (c) personal check with approved credit drawn on a U.S. bank, (d) wire transfer or other immediate bank transfer, or (e) Visa, MasterCard, American Express or Discover credit, charge or debit card. A processing fee will be assessed on any returned checks. Please note that the amount of cash notes and cash equivalents that can be accepted from a given purchaser may be limited.

The purchaser grants us a security interest in the property, and we may retain as collateral security for the purchaser's obligations to us, any property and all monies held or received by us for the account of the purchaser, in our possession. We retain all rights of a secured party under the California Commercial Code. If the foregoing conditions or any other applicable conditions herein are not complied with, in addition to other remedies available to us and the consignor by law, including without limitation, the right to hold the purchaser liable for the purchase price, we at our option may either (a) cancel the sale, retaining as liquidated damages all payments made by the purchaser or (b) resell the property, either publicly or privately, and in such

event the purchaser shall be liable for the payment of any deficiency plus all costs and expenses of both sales, our commission at our standard rates, all other charges due hereunder, attorneys' fees, expenses and incidental damages. In addition, where two or more amounts are owed in respect of different transactions by the purchaser to us, to Bonhams 1793 Limited and/or to any of our other affiliates, subsidiaries or parent companies worldwide within the Bonhams Group, we reserve the right to apply any monies paid in respect of a transaction to discharge any amount owed by the purchaser. If all fees, commissions, premiums, bid price and other sums due to us from the purchaser are not paid promptly as provided in these Conditions of Sale, we reserve the right to impose a finance charge equal to 1.5% per month on all amounts due to us beginning on the 31st day following the sale until payment is received, in addition to other remedies available to us by law.

3. We reserve the right to withdraw any property and to divide and combine lots at any time before such property's auction. Unless otherwise announced by the auctioneer at the time of sale, all bids are per lot as numbered in the catalog and no lots shall be divided or combined for sale.

4. We reserve the right to reject a bid from any bidder, to split any bidding increment, and to advance the bidding in any manner the auctioneer may decide. In the event of any dispute between bidders, or in the event the auctioneer doubts the validity of any bid, the auctioneer shall have sole and final discretion either to determine the successful bidder or to re-offer and resell the article in dispute. If any dispute arises after the sale, our sales records shall be conclusive in all respects.

5. If we are prevented by fire, theft or any other reason whatsoever from delivering any property to the purchaser or a sale otherwise cannot be completed, our liability shall be limited to the sum actually paid therefor by the purchaser and shall in no event include any compensatory, incidental or consequential damages.

6. If a lot is offered subject to a reserve, we may implement such reserve by bidding on behalf of the consignor, whether by opening bidding or continuing bidding in response to other bidders until reaching the reserve. If we have an interest in an offered lot and the proceeds therefrom other than our commissions, we may bid therefor to protect such interest. **CONSIGNORS ARE NOT ALLOWED TO BID ON THEIR OWN ITEMS.**

7. All statements contained in the catalog or in any bill of sale, condition report, invoice or elsewhere as to authorship, period, culture, source, origin, measurement, quality, rarity, provenance, importance, exhibition and literature of historical relevance, or physical condition **ARE QUALIFIED STATEMENTS OF OPINION AND NOT REPRESENTATIONS OR WARRANTIES.** No employee or agent of Bonhams is authorized to make on our behalf or on that of the consignor any representation or warranty, oral or written, with respect to any property.

8. All purchased property shall be removed from the premises at which the sale is conducted by the date(s) and time(s) set forth in the "Buyer's Guide" portion of this catalog. Property designated with a "W" and associated purchased lots, if not removed promptly following sale, will be transferred to an offsite warehouse at the purchaser's risk and expense, as set forth in more detail in the "Buyer's Guide." Purchased property that is permitted to remain onsite at Bonhams' facility should be removed at the purchaser's expense not later than 5:00 p.m. Pacific Time five (5) business days following the date of the sale. If not so removed, a storage fee of \$5.00 per lot per day will be payable to us by the purchaser beginning at the close

of the 21st day following the sale, and we may thereafter transfer such property to an offsite warehouse at the purchaser's risk and expense. Accounts must be settled in full before property will be released. Packing and handling of purchased lots are the responsibility of the purchaser. Bonhams can provide packing and shipping services for certain items as noted in the "Buyer's Guide" section of the catalog.

9. The copyright in the text of the catalog and the photographs, digital images and illustrations of lots in the catalog belong to Bonhams or its licensors. You will not reproduce or permit anyone else to reproduce such text, photographs, digital images or illustrations without our prior written consent.

10. These Conditions of Sale shall bind the successors and assigns of all bidders and purchasers and inure to the benefit of our successors and assigns. No waiver, amendment or modification of the terms hereof (other than posted notices or oral announcements during the sale) shall bind us unless specifically stated in writing and signed by us. If any part of these Conditions of Sale is for any reason invalid or unenforceable, the rest shall remain valid and enforceable.

11. These Conditions of Sale and the purchaser's and our respective rights and obligations hereunder are governed by the laws of the State of California. By bidding at an auction, each purchaser and bidder agrees to be bound by these Conditions of Sale. Any dispute, controversy or claim arising out of or relating to this agreement, or the breach, termination or validity thereof, brought by or against Bonhams (but not including claims brought against the consignor by the purchaser of lots consigned hereunder) shall be resolved by the procedures set forth below.

MEDIATION AND ARBITRATION PROCEDURES

(a) Within 30 days of written notice that there is a dispute, the parties or their authorized and empowered representatives shall meet by telephone and/or in person to mediate their differences. If the parties agree, a mutually acceptable mediator shall be selected and the parties will equally share such mediator's fees. The mediator shall be a retired judge or an attorney familiar with commercial law and trained in or qualified by experience in handling mediations. Any communications made during the mediation process shall not be admissible in any subsequent arbitration, mediation or judicial proceeding. All proceedings and any resolutions thereof shall be confidential, and the terms governing arbitration set forth in paragraph (c) below shall govern.

(b) If mediation does not resolve all disputes between the parties, or in any event no longer than 60 days after receipt of the written notice of dispute referred to above, the parties shall submit the dispute for binding arbitration before a single neutral arbitrator. Such arbitrator shall be a retired judge or an attorney familiar with commercial law and trained in or qualified by experience in handling arbitrations. Such arbitrator shall make all appropriate disclosures required by law. The arbitrator shall be drawn from a panel of a national arbitration service agreed to by the parties, and shall be selected as follows: (i) If the national arbitration service has specific rules or procedures, those rules or procedures shall be followed; (ii) If the national arbitration service does not have rules or procedures for the selection of an arbitrator, the arbitrator shall be an individual jointly agreed to by the parties. If the parties cannot agree on a national arbitration service, the arbitration shall be conducted by the American Arbitration Association, and the arbitrator shall be selected in accordance with the Rules of the

CONDITIONS OF SALE - CONTINUED

American Arbitration Association. The arbitrator's award shall be in writing and shall set forth findings of fact and legal conclusions.

(c) Unless otherwise agreed to by the parties or provided by the published rules of the national arbitration service:

(i) the arbitration shall occur within 60 days following the selection of the arbitrator;

(ii) the arbitration shall be conducted in the designated location, as follows: (A) in any case in which the subject auction by Bonhams took place or was scheduled to take place in the State of New York or Connecticut or the Commonwealth of Massachusetts, the arbitration shall take place in New York City, New York; (B) in all other cases, the arbitration shall take place in the city of San Francisco, California; and

(iii) discovery and the procedure for the arbitration shall be as follows:

(A) All arbitration proceedings shall be confidential;

(B) The parties shall submit written briefs to the arbitrator no later than 15 days before the arbitration commences;

(C) Discovery, if any, shall be limited as follows: (I) Requests for no more than 10 categories of documents, to be provided to the requesting party within 14 days of written request therefor; (II) No more than two (2) depositions per party, provided however, the deposition(s) are to be completed within one (1) day; (III) Compliance with the above shall be enforced by the arbitrator in accordance with California law;

(D) Each party shall have no longer than eight (8) hours to present its position. The entire hearing before the arbitrator shall not take longer than three (3) consecutive days;

(E) The award shall be made in writing no more than 30 days following the end of the proceeding. Judgment upon the award rendered by the arbitrator may be entered by any court having jurisdiction thereof.

To the fullest extent permitted by law, and except as required by applicable arbitration rules, each party shall bear its own attorneys' fees and costs in connection with the proceedings and shall share equally the fees and expenses of the arbitrator.

LIMITED RIGHT OF RESCISSION

If within one (1) year from the date of sale, the original purchaser (a) gives written notice to us alleging that the identification of Authorship (as defined below) of such lot as set forth in the **BOLD TYPE** heading of the catalog description of such lot (as amended by any saleroom notices or verbal announcements during the sale) is not substantially correct based on a fair reading of the catalog (including the terms of any glossary contained therein), and (b) within 10 days after such notice returns the lot to us in the same condition as at the time of sale, and (c) establishes the allegation in the notice to our satisfaction (including by providing one or more written opinions by recognized experts in the field, as we may reasonably require), then the sale of such lot will be rescinded and, unless we have already paid to the consignor monies owed him in connection with the sale, the original purchase price will be refunded.

If, prior to receiving such notice from the original purchaser alleging such defect, we have paid the consignor monies owed him in connection with the sale, we shall pay the original purchaser the amount of our commissions, any other sale proceeds to which we are entitled and applicable taxes received from the purchaser on the sale and make demand on the consignor to pay the balance of the original purchase price to the original purchaser. Should the consignor fail to pay such amount promptly, we may disclose the identity of the consignor and assign to the original purchaser our rights against the consignor with respect to the lot the sale of which is sought to be rescinded. Upon such disclosure and assignment, any liability of Bonhams as consignor's agent with respect to said lot shall automatically terminate.

The foregoing limited right of rescission is available to the original purchaser only and may not be assigned to or relied upon by any subsequent transferee of the property sold. The purchaser hereby accepts the benefit of the consignor's warranty of title and other representations and warranties made by the consignor for the purchaser's benefit. Nothing in this section shall be construed as an admission by us of any representation of fact, express or implied, obligation or responsibility with respect to any lot. **THE PURCHASER'S SOLE AND EXCLUSIVE**

REMEDY AGAINST BONHAMS FOR ANY REASON WHATSOEVER IS THE LIMITED RIGHT OF RESCISSION DESCRIBED IN THIS SECTION.

"Authorship" means only the identity of the creator, the period, culture and source or origin of the lot, as the case may be, as set forth in the **BOLD TYPE** heading of the print catalog entry. The right of rescission does not extend to: (a) works of art executed before 1870 (unless these works are determined to be counterfeits created since 1870), as this is a matter of current scholarly opinion which can change; (b) titles, descriptions, or other identification of offered lots, which information normally appears in lower case type below the **BOLD TYPE** heading identifying the Authorship; (c) Authorship of any lot where it was specifically mentioned that there exists a conflict of specialist or scholarly opinion regarding the Authorship of the lot at the time of sale; (d) Authorship of any lot which as of the date of sale was in accordance with the then generally-accepted opinion of scholars and specialists regarding the same; or (e) the identification of periods or dates of creation in catalog descriptions which may be proven inaccurate by means of scientific processes that are not generally accepted for use until after publication of the catalog in which the property is offered or that were unreasonably expensive or impractical to use at the time of such publication.

LIMITATION OF LIABILITY

EXCEPT AS EXPRESSLY PROVIDED ABOVE, ALL PROPERTY IS SOLD "AS IS." NEITHER BONHAMS NOR THE CONSIGNOR MAKES ANY REPRESENTATION OR WARRANTY, EXPRESS OR IMPLIED, AS TO THE MERCHANTABILITY, FITNESS OR CONDITION OF THE PROPERTY OR AS TO THE CORRECTNESS OF DESCRIPTION, GENUINENESS, ATTRIBUTION, PROVENANCE OR PERIOD OF THE PROPERTY OR AS TO WHETHER THE PURCHASER ACQUIRES ANY COPYRIGHTS OR OTHER INTELLECTUAL PROPERTY RIGHTS IN LOTS SOLD OR AS TO WHETHER A WORK OF ART IS SUBJECT TO THE ARTIST'S MORAL RIGHTS OR OTHER RESIDUAL RIGHTS OF THE ARTIST. THE PURCHASER EXPRESSLY ACKNOWLEDGES AND AGREES THAT IN NO EVENT SHALL BONHAMS BE LIABLE FOR ANY DAMAGES INCLUDING, WITHOUT LIMITATION, ANY COMPENSATORY, INCIDENTAL OR CONSEQUENTIAL DAMAGES.

SELLER'S GUIDE

SELLING AT AUCTION

Bonhams can help you every step of the way when you are ready to sell art, antiques and collectible items at auction. Our regional offices and representatives throughout the US are available to service all of your needs. Should you have any further questions, please visit our website at www.bonhams.com/us for more information or call our Client Services Department at +1 (800) 223 2854 ext. 23550.

AUCTION ESTIMATES

The first step in the auction process is to determine the auction value of your property. Bonhams' world-renowned specialists will evaluate your special items at no charge and in complete confidence. You can obtain an auction estimate in many ways:

- Attend one of our Auction Appraisal Events held regularly at our galleries and in other major metropolitan areas. The updated schedule for Bonhams Auction Appraisal Events is available at www.bonhams.com/us.
- Call our Client Services Department to schedule a private appointment at one of our galleries. If you have a large collection, our specialists can travel, by appointment, to evaluate your property on site.
- Send clear photographs to us of each individual item, including item dimensions and other pertinent information with each picture. Photos should be sent to Bonhams' address in envelopes marked

as "photo auction estimate". Alternatively, you can submit your request using our online form at www.bonhams.com/us. Digital images may be attached to the form. Please limit your images to no more than five (5) per item.

CONSIGNING YOUR PROPERTY

After you receive an estimate, you may consign your property to us for sale in the next appropriate auction. Our staff assists you throughout the process, arranging transportation of your items to our galleries (at the consignor's expense), providing a detailed inventory of your consignment, and reporting the prices realized for each lot. We provide secure storage for your property in our warehouses and all items are insured throughout the auction process. You will receive payment for your property approximately 35 days after completion of sale.

Sales commissions vary with the potential auction value of the property and the particular auction in which the property is offered. Please call us for commission rates.

PROFESSIONAL APPRAISAL SERVICES

Bonhams' specialists conduct insurance and fair market value appraisals for private collectors, corporations, museums, fiduciaries and government entities on a daily basis. Insurance appraisals, used for insurance purposes, reflect the cost of replacing property in today's retail market. Fair market value appraisals are used for estate,

tax and family division purposes and reflect prices paid by a willing buyer to a willing seller.

When we conduct a private appraisal, our specialists will prepare a thorough inventory listing of all your appraised property by category. Valuations, complete descriptions and locations of items are included in the documentation.

Appraisal fees vary according to the nature of the collection, the amount of work involved, the travel distance, and whether the property is subsequently consigned for auction.

Our appraisers are available to help you anywhere and at any time. Please call our Client Services Department to schedule an appraisal.

ESTATE SERVICES

Since 1865, Bonhams has been serving the needs of fiduciaries – lawyers, trust officers, accountants and executors – in the disposition of large and small estates. Our services are specially designed to aid in the efficient appraisal and disposition of fine art, antiques, jewelry, and collectibles. We offer a full range of estate services, ranging from flexible financial terms to tailored accounting for heirs and their agents to world-class marketing and sales support.

For more information or to obtain a detailed Trust and Estates package, please visit our website at www.bonhams.com/us or contact our Client Services Department.

BUYER'S GUIDE

BIDDING & BUYING AT AUCTION

Whether you are an experienced bidder or an enthusiastic novice, auctions provide a stimulating atmosphere unlike any other. Bonhams previews and sales are free and open to the public. As you will find in these directions, bidding and buying at auction is easy and exciting. Should you have any further questions, please visit our website at www.bonhams.com or call our Client Services Department at +1 (800) 223 2854 ext. 23550.

Catalogs

Before each auction we publish illustrated catalogs that include dates and times for previews and auctions. Our catalogs also provide descriptions and estimated values for each "lot." A lot may refer to a single item or to a group of items auctioned together. We offer our catalogs by subscription or by single copy. For information on subscribing to our catalogs, you may refer to the subscription form in this catalog, call our Client Services Department, or visit our website at www.bonhams.com/us.

Previews

Auction previews are your chance to inspect each lot prior to the auction. We encourage you to look closely and examine each object on which you may want to bid so that you will know as much as possible about it. Items are sold "as is" and with all faults; illustrations in our catalogs, website and other materials are provided for identification only. At the previews, our staff is always available to answer your questions and guide you through the auction process. Condition reports may be available upon request.

Estimates

Bonhams catalogs include estimates for each lot, exclusive of buyer's premium and tax. The estimates are provided as an approximate guide to current market value and should not be interpreted as a representation or prediction of actual selling prices. They are determined well in advance of a sale and are subject to revision. Please contact us should you have any questions about value estimates.

Reserves

All lots in a catalog are subject to a reserve unless otherwise indicated. The reserve is the minimum price that the seller is willing to accept for a lot. This amount is confidential and does not exceed the low estimated value.

BIDDING AT AUCTION

At Bonhams, you can bid in many ways: in person, via absentee bid, over the phone, or via Bonhams' online bidding facility. Absentee bids can be submitted in person, online, via fax or via email.

A valid Bonhams client account is required to participate in bidding activity. You can obtain registration information online, at the reception desk or by calling our Client Services Department.

By bidding at auction, whether in person or by agent, by absentee bid, telephone, online or other means, the buyer or bidder agrees to be bound by the Conditions of Sale.

Lots are auctioned in consecutive numerical order as they appear in the catalog. Bidding normally begins below the low estimate. The auctioneer will accept bids from interested parties present in the saleroom, from telephone bidders, and from absentee bidders who have left written bids in advance of the sale. The auctioneer may also execute bids on behalf of the consignor up to the amount of the reserve, but never above it.

We assume no responsibility for failure to execute bids for any reason whatsoever.

In Person

If you are planning to bid at auction, you will need to register at the reception desk in order to receive a numbered bid card. To place a bid, hold up your card so that the auctioneer can clearly see it. Decide on the maximum amount that you wish to pay, exclusive of buyer's premium and tax, and continue bidding until your bid prevails or you reach your limit. If you are the successful bidder on a lot, the auctioneer will acknowledge your paddle number and bid amount.

Absentee Bids

As a service to those wishing to place bids, we may at our discretion accept bids without charge in advance of sale by telephone, by facsimile or in writing on bidding forms available from us. "Buy" bids will not be accepted; all bids must state the highest bid price the bidder is willing to pay. Our auction staff

will try to bid just as you would, with the goal of obtaining the item at the lowest bid price possible. In the event identical bids are submitted, the earliest bid submitted will take precedence. Absentee bids shall be executed in competition with other absentee bids, any applicable reserve, and bids from other auction participants. A friend or agent may place bids on your behalf, provided that we have received your written authorization prior to the sale. Absentee bid forms are available in our catalogs, online at www.bonhams.com/us, and at our San Francisco, Los Angeles and New York galleries.

By Telephone

Under special circumstances, we can arrange for you to bid by telephone. To arrange for a telephone bid, please contact our Client Services Department a minimum of 24 hours prior to the sale.

Online

Web users may place absentee bids online from anywhere in the world. To bid online, please visit our website at www.bonhams.com/us.

We are pleased to make our live online bidding facility available to bidders in this sale.

Additional terms and conditions of sale relating to online bidding will apply. Please see www.bonhams.com/23411 or contact the Client Services Department to obtain information and learn how you can register and bid online in this sale.

Bid Increments

Bonhams generally uses the following increment multiples as bidding progresses:

\$50-200	by \$10s
\$200-500	by \$20/50/80s
\$500-1,000	by \$50s
\$1,000-2,000	by \$100s
\$2,000-5,000	by \$200/500/800s
\$5,000-10,000	by \$500s
\$10,000-20,000	by \$1,000s
\$20,000-50,000	by \$2,000/5,000/8,000s
\$50,000-100,000	by \$5,000s
\$100,000-200,000	by \$10,000s
above \$200,000	at auctioneer's discretion

The auctioneer may split or reject any bid at any time at his or her discretion as outlined in the Conditions of Sale.

Currency Converter

Solely for the convenience of bidders, a currency converter may be provided at Bonhams sales. The rates quoted for conversion of other currencies to U.S. Dollars are indications only and should not be relied upon by a bidder, and neither Bonhams nor its agents shall be responsible for any errors or omissions in the operation or accuracy of the currency converter.

Buyer's Premium

A buyer's premium is added to the winning bid price of each individual lot purchased, at the rates set forth in the Conditions of Sale. The winning bid price plus the premium constitute the purchase price for the lot. Applicable sales taxes are computed based on this figure, and the total becomes your final purchase price.

Unless specifically illustrated and noted, fine art frames are not included in the estimate or purchase price. Bonhams accepts no liability for damage or loss to frames during storage or shipment.

All sales are final and subject to the Conditions of Sale found in our catalogs, on our website, and available at the reception desk.

Payment

All buyers are asked to pay and pick up by 3pm on the business day following the auction. Payment may be made to Bonhams by cash, checks drawn on a U.S. bank, money order, wire transfer, or by Visa, MasterCard, American Express or Discover credit or charge card or debit card. All items must be paid for within 5 business days of the sale. Please note that payment by personal or business check may result in property not being released until purchase funds clear our bank.

Sales Tax

Residents of states listed in Paragraph 1 of the Conditions of Sale must pay applicable sales tax. Other state or local taxes (or compensation use taxes) may apply. Sales tax will be automatically added to the invoice unless a valid resale number has been furnished or the property is shipped via

common carrier to destinations outside the states listed in the Conditions of Sale. If you wish to use your resale license please contact Cashiers for our form.

Shipping & Removal

Buyers are to review the Offsite Sold Property Storage page for a list of lots that will be removed to the offsite warehouse of Box Brothers. These designated lots must be retrieved by the buyer prior to the day and time designated on the Offsite Sold Property Storage page. If buyers of these designated lots also buy other lots, such as decorations, rugs or works of art, these lots may also be removed to the warehouse of Box Brothers, so all lots remain together and customers can collect or ship from one location. All other items will remain at Bonhams for a period of 21 days, after which time they may be transferred to offsite storage. [Wine, Jewelry, Natural History, Collectibles, 20th Century Decorative Arts, Rugs, Native American Art, Tribal Art](#) and most [Arms & Armor](#) auctions are not included in this policy.

Box Brothers San Leandro (for San Francisco auctions only)
1471 Doolittle Drive, San Leandro, CA 94577
Tel (800) 942 6822; Fax (510) 628 8454

Box Brothers Los Angeles (for Los Angeles auctions only)
220 W. Ivy Ave, Unit C, Inglewood, Ca 90302
+1 (310) 419 9915 or +1 (800) 474 7447

Box Brothers is open Monday-Friday 8am-5pm with Saturday and Sunday hours available. Buyers must contact Box Brothers 24 hours in advance of pickup. Appointments are required.

Bonhams can accommodate shipping for certain items. Please contact our Cashiers Department for more information or to obtain a quote. Refer to Conditions of Sale for special terms governing the shipment of Arms and Wine. Shipments are made during weekday business hours up to four weeks after payment is received. Carriers are not permitted to deliver to P.O. Boxes.

International buyers are responsible for all import/export customs duties and taxes. An invoice stating the actual purchase price(s) will accompany all international purchases.

Simultaneous sale property collection notice:

If this sale previews in multiple cities, please see the title page for details regarding final location of property for collection.

Handling and Storage Charges

Please note: For sold lots removed to Box Brothers, there will be no post-sale storage charge for lots collected within 5 days from the sale date. For lots that remain at Bonhams, there will be no post-sale storage charge for lots collected within 21 days of the sale date. Handling fees may apply.

Lots uncollected at Bonhams after 21 days may be removed to the warehouse of Box Brothers. Handling and storage fees will apply.

Insurance: All sold lots are insured by Box Brothers at the sum of the hammer price plus buyer's premium.

Please refer to Box Brothers for a list of Handling, Storage and Insurance fees.

Payment

Payments for purchased lots must be made directly to Bonhams. Box Brothers will not release property to a buyer unless the buyer has paid Bonhams first. All charges for handling and storage due to Box Brothers must be paid by the time of collection from their warehouse. Please telephone Box Brothers at +1 (800) 474 7447 in advance to ascertain the amount due. **Lots will only be released from Box Brothers' warehouse with a "Release Order" obtained from the cashier's office at Bonhams.**

The removal/storage and/or shipment by Box Brothers of any lots will be subject to their standard Conditions of Business, copies of which are available at Bonhams or from Box Brothers directly.

Auction Results

To find out the final purchase price for any lot following the sale, please call our automated auction results line at +1 (800) 223 2854 ext. 3400. Auction results are usually available on the next business day following the sale or online at www.bonhams.com/us.

Catalog Order Form

Bonhams

Please check the Auction Catalog(s) you would like to receive, complete the address and payment information below and send the completed form via email to catalogs.us@bonhams.com, or via fax at (415) 861 8951, or mail to:

Bonhams
220 San Bruno Avenue
San Francisco, California 94103

If you have any questions please contact us at +1 (800) 223 2854

Category Name	Internal	Domestic Address*	International Address*	Issues per year**
19th CENTURY PAINTINGS (Including Russian and Dogs in Art)	PIC41	<input type="checkbox"/> \$200	<input type="checkbox"/> \$280	5
20TH CENTURY FURNITURE & DECORATIVE ARTS	FRN21	<input type="checkbox"/> \$160	<input type="checkbox"/> \$200	4
AFRICAN, OCEANIC & PRE-COLUMBIAN ART	TRI12	<input type="checkbox"/> \$120	<input type="checkbox"/> \$150	3
AMERICAN & CALIFORNIA WESTERN PAINTINGS & SCULPTURE	PIC40	<input type="checkbox"/> \$200	<input type="checkbox"/> \$250	5
ARMS, ARMOR AND MODERN SPORTING GUNS	ARM10	<input type="checkbox"/> \$80	<input type="checkbox"/> \$100	2
ASIAN WORKS OF ART	ASN10	<input type="checkbox"/> \$360	<input type="checkbox"/> \$430	9
BONHAMS QUARTERLY MAGAZINE	MAGB	<input type="checkbox"/> \$30		4
BOOKS, MANUSCRIPTS & RELATED CATEGORIES	BKS10	<input type="checkbox"/> \$320	<input type="checkbox"/> \$400	8
COINS AND BANKNOTES	CNS10	<input type="checkbox"/> \$160	<input type="checkbox"/> \$200	4
CONTEMPORARY ART (Including Made in California)	PIC50 & PIC52	<input type="checkbox"/> \$200	<input type="checkbox"/> \$250	5
ENTERTAINMENT MEMORABILIA & COLLECTABLES	COL10	<input type="checkbox"/> \$160	<input type="checkbox"/> \$200	4
EUROPEAN & AMERICAN FURNITURE & DECORATIVE ARTS	FRN20	<input type="checkbox"/> \$320	<input type="checkbox"/> \$400	7
IMPRESSIONIST AND MODERN ART	PIC55	<input type="checkbox"/> \$100	<input type="checkbox"/> \$120	2
INDIAN, HIMALAYAN & SOUTHEAST ASIAN ART	ASN12	<input type="checkbox"/> \$80	<input type="checkbox"/> \$100	2
JAPANESE WORKS OF ART	ASN11	<input type="checkbox"/> \$120	<input type="checkbox"/> \$140	3
JEWELRY	JWL10	<input type="checkbox"/> \$320	<input type="checkbox"/> \$400	8
MADE IN CALIFORNIA CONTEMPORARY ART	PIC52	<input type="checkbox"/> \$80	<input type="checkbox"/> \$100	2
MARITIME PAINTINGS AND DECORATIVE ARTS	COL11	<input type="checkbox"/> \$80	<input type="checkbox"/> \$100	2
MOTOR CARS, MOTORCYCLES & AUTOMOBILIA	MOT10 & MOT20	<input type="checkbox"/> \$330	<input type="checkbox"/> \$390	6
MOTORCYCLES	MOT20	<input type="checkbox"/> \$40	<input type="checkbox"/> \$50	1
NATIVE AMERICAN ART	NTV10	<input type="checkbox"/> \$120	<input type="checkbox"/> \$150	3
NATURAL HISTORY, GEMS, MINERALS & LAPIDARY	NAT10	<input type="checkbox"/> \$120	<input type="checkbox"/> \$150	3
ORIENTAL RUGS AND CARPETS	CPT10	<input type="checkbox"/> \$160	<input type="checkbox"/> \$200	3
PHOTOGRAPHS	PIC44	<input type="checkbox"/> \$120	<input type="checkbox"/> \$150	3
PRINTS	PIC43	<input type="checkbox"/> \$120	<input type="checkbox"/> \$150	3
SPACE MEMORABILIA	BKS11	<input type="checkbox"/> \$40	<input type="checkbox"/> \$50	1
WATCHES	JWL11	<input type="checkbox"/> \$120	<input type="checkbox"/> \$150	3
WINES & WHISKY	WIN10	<input type="checkbox"/> \$280	<input type="checkbox"/> \$350	5
WRITING INSTRUMENTS	COL20	<input type="checkbox"/> \$50	<input type="checkbox"/> \$70	2
ALL CATEGORIES	ALLCAT	<input type="checkbox"/> \$4,500	<input type="checkbox"/> \$5,600	112

**The number of auction catalogs and sales listed for a subscription are strictly estimates. We are not responsible for refunds or credits if the number of sales alters from the estimate. Some of the above categories may include our auctions in other locations.

Method of Payment

Check/Money Order enclosed for \$: _____
Payable to Bonhams & Butterfields

Visa Mastercard American Express

Card Number _____ 16-digit Number

Expiration Date ____ / ____ CVV ____

Cardholder Name _____

Address _____

City _____ State __ Zip _____ Country _____

Signature _____ Date _____

Send Catalogs to:

Name _____

Address _____

City _____ State __ Zip _____ Country _____

Telephone _____ Fax _____

E-mail _____

Client Number (internal use only) _____

CONTACTS

OFFICERS

Malcolm Barber
Co-Chairman

Matthew Girling
Chief Executive Officer

Laura King Pfaff †
Chairman Emeritus

Leslie Wright
Vice President, Trusts and Estates

Jon King
Vice President, Business Development

Vice Presidents, Specialists
Susan F. Abeles
Rupert Banner
Judith Eurich
Mark Fisher
Martin Gammon
Dessa Goddard
Jakob Greisen
Scot Levitt
Mark Osborne
Brooke Sivo
Catherine Williamson

REPRESENTATIVES

Arizona

Terri Adrian-Hardy, (480) 994 5362

California - Central Valley

David Daniel, (916) 364 1645

California - Palm Springs

Brooke Sivo, (760) 350 4255

Colorado - Denver

Julie Segraves, (720) 355 3737 †

District of Columbia/Mid-Atlantic

Martin Gammon, (202) 333 1696

Florida

Jon King
(561) 651 7876, Palm Beach
(305) 228 6600, Miami
(954) 566 1630, Ft. Lauderdale

Georgia

Mary Moore Bethea, (404) 842 1500 †

Illinois

Ricki Harris
(773) 267 3300, (773) 680 2881

Massachusetts/Boston/New England

Amy Corcoran, (617) 742 0909

Nevada

David Daniel, (775) 831 0330

New Jersey

Alan Fausel, (973) 997 9954 †

New Mexico

Michael Bartlett, (505) 820 0701

Oregon and Idaho

Sheryl Acheson, (503) 312 6023

Pennsylvania

Alan Fausel, (610) 644 1199 †

Texas

Amy Lawch, (202) 333 1696 †

Virginia

Gertraud Hechl, (713) 621 5988 †

Washington

Heather O'Mahony, (206) 218 5011

Canada

Toronto, Ontario

Jack Kerr-Wilson, (416) 462 9004 †

Montreal, Quebec

David Kelsey, (514) 894 1138 †

BONHAMS *

NEW YORK DEPARTMENTS
580 Madison Avenue
New York, New York 10022
(212) 644 9001

Books & Manuscripts

Christina Geiger, (212) 644 9094
Brian Kalkbrenner, (917) 206 1625

Chinese Works of Art & Paintings

Bruce MacLaren, (917) 206 1677

Collectors' Motorcars & Motorcycles

Rupert Banner, (212) 461 6515
Eric Minoff, (917) 206 1630
Evan Ide

Fine Art

American

Kayla Carlsen, (917) 206 1699

Contemporary

Jeremy Goldsmith, (917) 206 1656

European Paintings

Madalina Lazen, (212) 644 9108

Impressionist & Modern

William O'Reilly, (212) 644 9135

Himalayan Art

Mark Rasmussen, (917) 206 1688

Japanese Works of Art

Jeff Olson, (212) 461 6516

Jewelry

Susan F. Abeles, (212) 461 6525
Caroline Morrissey, (212) 644 9046
Camille Barbier (212) 644 9035

Maritime Paintings & Works of Art

Gregg Dietrich, (212) 644 9001 †

Photographs & Prints

Shawna Brickley, (917) 206 1690

Russian Fine & Decorative Arts

Yelena Harbick, (212) 644 9136

Trusts & Estates

Sherri Cohen, (917) 206 1671

Watches & Clocks

Jonathan Snellenburg, (212) 461 6530

Wine & Whisky

(415) 503 3319

BONHAMS *

SAN FRANCISCO DEPARTMENTS
220 San Bruno Avenue
San Francisco California 94103
(800) 223 2854

20th Century Fine Art

Dane Jensen, ext. 65451

Arms & Armor

Paul Carella, ext. 23360
James Ferrell, ext. 23332

Asian Works of Art

Dessa Goddard, ext. 23333

Books & Manuscripts

Adam Stackhouse, ext. 23266

Decorative Arts

Jennifer Kurtz, ext. 65478

Furniture & Decorative Arts, European

Andrew Jones, ext. 65432

Jewelry & Watches

Shannon Beck, ext. 23306

Collectors' Motorcars & Motorcycles

Mark Osborne, ext. 23353
Jakob Greisen, ext. 23284

Museum Services

Laura King Pfaff, ext. 23210

Native American Art

Ingmars Lindbergs, ext. 23393

California & Western Paintings & Sculpture

Aaron Bastian, ext. 23241

Photographs

Prints

Judith Eurich, ext. 23259

Space History

Adam Stackhouse, ext. 23266

Trusts & Estates

Victoria Richardson, ext. 23207
Celeste Smith, ext. 23214

Wine & Whisky

(415) 503 3319

Writing Instruments

Ivan Briggs, ext. 23255

Watches

Ivan Briggs, ext. 23255

BONHAMS *

LOS ANGELES DEPARTMENTS
7601 W. Sunset Boulevard
Los Angeles California 90046
(800) 223 2854

20th Century Decorative Arts

Angela Past, ext. 65422

20th Century Fine Art

Alexis Chompaisal, ext. 65469

African, Oceanic & Pre-Columbian Art

Fredric W. Backlar, ext. 65416 †

Books & Manuscripts

Catherine Williamson, ext. 65442

Coins & Banknotes

Paul Song, ext. 65455

Entertainment Memorabilia

Catherine Williamson, ext. 65442
Dana Hawkes, (978) 283 1518

Furniture & Decorative Arts

Andrew Jones, ext. 65432

Furniture & Decorative Arts, American

Brooke Sivo, ext. 65420

Jewelry & Watches

Dana Ehrman, ext. 65407
Claire De Biasio-Paris, ext. 65483

Collectors' Motorcars & Motorcycles

Nick Smith, ext. 65470

Contemporary Art

Dane Jensen, ext. 65451

Photographs

Prints

Morisa Rosenberg, ext. 65435

Natural History

Thomas E. Lindgren, ext. 65437 †
Claudia Florian, G.J.G., ext. 65437 †

California & Western Paintings & Sculpture

Scot Levitt, ext. 65425

Paintings - European

Mark Fisher, ext. 65488

Silver

Aileen Ward, ext 65463

Trusts & Estates

Leslie Wright, ext. 65408
Joseph Francaviglia, ext. 65443

* Indicates saleroom

† Indicates independent contractor

CLIENT SERVICES DEPARTMENT

San Francisco

(415) 861 7500
(415) 861 8951 fax

Los Angeles

(323) 850 7500
(323) 850 6090 fax

Monday - Friday, 8.30am to 5pm

New York

(212) 644 9001
(212) 644 9009 fax

Monday - Friday, 9am to 5.30pm

Toll Free

(800) 223 2854

The following information is recorded and available 24 hours a day, 7 days a week, through our telephone system:

- Auction and Preview Information
- Directions to Bonhams's salesrooms
- Automated Auction Results

Auction Registration Form

(Attendee / Absentee / Online / Telephone Bidding)

Please circle your bidding method above.

--	--	--	--

Paddle number (for office use only)

General Notice: This sale will be conducted in accordance with Bonhams Conditions of Sale, and your bidding and buying at the sale will be governed by such terms and conditions. Please read the Conditions of Sale in conjunction with the Buyer's Guide relating to this sale and other published notices and terms relating to bidding. Payment by personal or business check may result in your property not being released until purchase funds clear our bank. Checks must be drawn on a U.S. bank.

Notice to Absentee Bidders: In the table below, please provide details of the lots on which you wish to place bids at least 24 hours prior to the sale. Bids will be rounded down to the nearest increment. Please refer to the Buyer's Guide in the catalog for further information relating to instructions to Bonhams to execute absentee bids on your behalf. Bonhams will endeavor to execute bids on your behalf but will not be liable for any errors or non-executed bids.

Notice to First Time Bidders: New clients are requested to provide photographic proof of ID - passport, driving license, ID card, together with proof of address - utility bill, bank or credit card statement etc. Corporate clients should also provide a copy of their articles of association / company registration documents, together with a letter authorizing the individual to bid on the company's behalf. Failure to provide this may result in your bids not being processed. For higher value lots you may also be asked to provide a bankers reference.

Notice to online bidders; If you have forgotten your username and password for www.bonhams.com, please contact Client Services.

If successful

- I will collect the purchases myself
- Please contact me with a shipping quote (if applicable)
- I will arrange a third party to collect my purchase(s)

Please mail or fax the completed Registration Form and requested information to:

Bonhams Client Services Department
 7601 Sunset Blvd
 Los Angeles, California 90046
 Tel +1 (800) 223 2854
 Fax +1 (323) 850 6090
 Automated results
 Tel +1 (415) 503 3410

Bonhams

Sale title: California Jewels		Sale date: Monday November 21, 2016	
Sale no. 23449		Sale venue: Los Angeles	
General Bid Increments:			
\$10 - 200by 10s		\$10,000 - 20,000by 1,000s	
\$200 - 500by 20 / 50 / 80s		\$20,000 - 50,000by 2,000 / 5,000 / 8,000s	
\$500 - 1,000by 50s		\$50,000 - 100,000by 5,000s	
\$1,000 - 2,000by 100s		\$100,000 - 200,000by 10,000s	
\$2,000 - 5,000by 200 / 500 / 800s		above \$200,000at the auctioneer's discretion	
\$5,000 - 10,000by 500s		The auctioneer has discretion to split any bid at any time.	
Customer Number		Title	
First Name		Last Name	
Company name (to be invoiced if applicable)			
Address			
City		County / State	
Post / Zip code		Country	
Telephone mobile		Telephone daytime	
Telephone evening		Fax	
Telephone bidders: indicate primary and secondary contact numbers by writing ① or ② next to the telephone number.			
E-mail (in capitals) _____			
By providing your email address above, you authorize Bonhams to send you marketing materials and news concerning Bonhams and partner organizations. Bonhams does not sell or trade email addresses.			
I am registering to bid as a private client <input type="checkbox"/>		I am registering to bid as a trade client <input type="checkbox"/>	
Resale: please enter your resale license number here _____ We may contact you for additional information.			

SHIPPING	
Shipping Address (if different than above):	
Address: _____	Country: _____
City: _____	Post/ZIP code: _____

Please note that all telephone calls are recorded.

Type of bid (A-Absentee, T-Telephone)	Lot no.	Brief description (In the event of any discrepancy, lot number and not lot description will govern.) If you are bidding online there is no need to complete this section.	MAX bid in US\$ (excluding premium and applicable tax) Emergency bid for telephone bidders only*

You instruct us to execute each absentee bid up to the corresponding bid amount indicated above.

* Emergency Bid: A maximum bid (exclusive of Buyer's Premium and tax) to be executed by Bonhams only if we are unable to contact you by telephone or should the connection be lost during bidding.

BY SIGNING THIS FORM YOU AGREE THAT YOU HAVE READ AND UNDERSTAND OUR CONDITIONS OF SALE AND SHALL BE LEGALLY BOUND BY THEM, AND YOU AGREE TO PAY THE BUYER'S PREMIUM, ANY APPLICABLE TAXES, AND ANY OTHER CHARGES MENTIONED IN THE BUYER'S GUIDE OR CONDITIONS OF SALE. THIS AFFECTS YOUR LEGAL RIGHTS.	
Your signature: _____	Date: _____



Bonhams

7601 W. Sunset Boulevard
Los Angeles, California 90046

+1 323 850 7500
+1 323 850 6090 (fax)

